



**TOURIST ACCOMMODATION, SOUTH AUSTRALIA,
 DECEMBER QUARTER 1993**

MAIN FEATURES

DECEMBER QUARTER 1993
 COMPARED WITH
 DECEMBER QUARTER 1992

HOTELS, MOTELS AND GUEST HOUSES

- Rooms available decreased by 1.0 per cent from 10,763 to 10,650 whilst bed spaces fell by 1.1 per cent from 30,201 to 29,864.
- Room nights occupied increased by 4.2 per cent from 472,870 to 492,626 overall with star grade four and star grade five establishments recording increases of 11.8 per cent and 8.2 per cent respectively.
- The room occupancy rate overall rose from 47.8 per cent to 50.3 per cent with star grade four establishments increasing by 4.8 percentage points and star grade five establishments increasing by 4.9 percentage points.
- Guest nights increased by 3.3 per cent from 798,074 to 824,500 and the bed occupancy rate increased from 28.7 per cent to 30.0 per cent.
- Guest arrivals at hotels, motels and guest houses increased by 6.9 per cent from 413,495 to 442,081 and the average length of stay was unchanged at 1.9 days overall.
- Takings from accommodation increased by 5.6 per cent from \$36.1m to \$38.1m with average takings per room night occupied rising by 1.4 per cent from \$76 to \$77.

HOLIDAY FLATS, UNITS AND HOUSES

- The number of units, etc. available for short-term letting increased by 4.1 per cent to 1,377 while unit nights occupied increased by 8.0 per cent from 48,675 to 52,563.
- The unit occupancy rate consequently rose from 40.0 per cent to 41.6 per cent.
- Unit lettings increased by 5.8 per cent from 9,805 to 10,375 and the average length of stay increased from 5.0 days to 5.1 days.
- Accommodation takings increased by 13.3 per cent from \$2.9m to \$3.3m while the average takings per unit night occupied increased by 4.9 per cent from \$60 to \$63.

CARAVAN PARKS

- Caravan park capacity available increased by 0.6 per cent from 24,307 to 24,448 powered and unpowered sites and cabins, etc. while site nights occupied increased by 2.9 per cent from 566,463 to 582,692.
- The site occupancy rate thus rose by 0.7 percentage points to 26.0 per cent.
- Accommodation takings increased by 6.2 per cent from \$6.5m to \$6.9m with the average takings per site night steady at \$12.

VISITOR HOSTELS

- Bed spaces available increased by 2.3 per cent from 1,992 to 2,037.
- Guest nights occupied rose by 7.7 per cent from 55,064 to 59,296 and the bed occupancy rate increased from 30.0 per cent to 31.6 per cent.
- Guest arrivals fell from 27,981 to 27,628 but the average length of stay increased from 2.0 days to 2.1 days.
- Accommodation takings rose from \$0.56m to \$0.64m while average takings per guest night increased from \$10 to \$11.

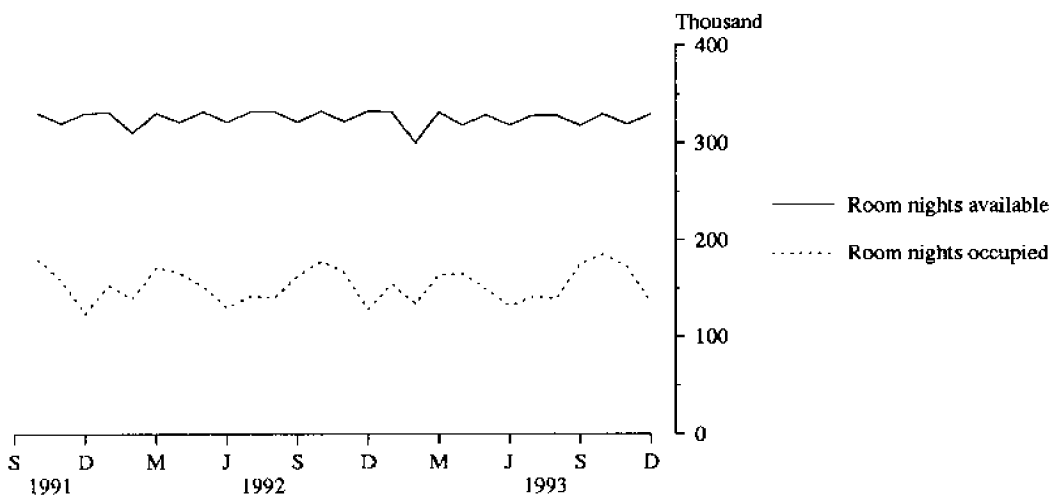
NOTE

From December quarter 1993, hotel, motel and guest house establishments with fewer than five rooms have been formally excluded from the scope of this statistical collection. This change in scope resulted in the exclusion of 16 establishments which in the September quarter 1993 Survey aggregates for South Australia represented 4.5 per cent of hotel, motel and guest house establishments but accounted for less than 0.6 per cent of accommodation capacity, occupancy and takings.

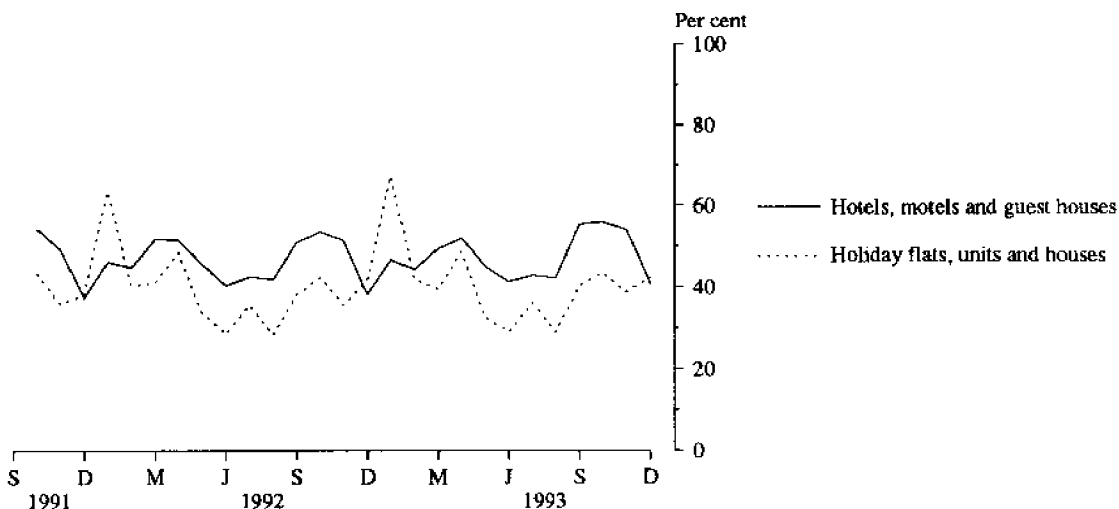
INQUIRIES

- for further information about statistics in this publication and the availability of related unpublished statistics, contact Brian Hay on 008 077304 or any ABS office.
- for information about other ABS statistics and services, refer to the back page of this publication.

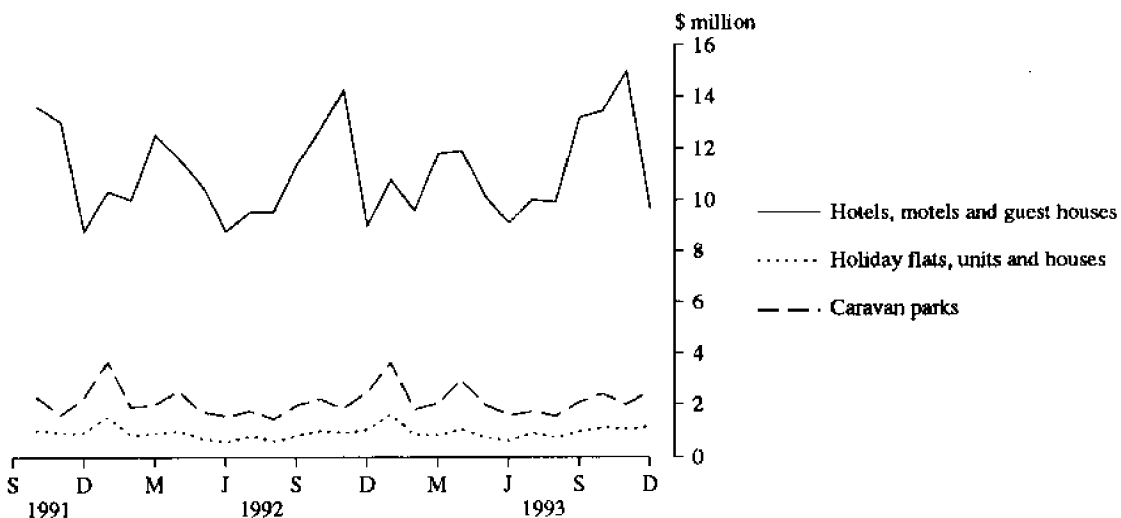
**MONTHLY ROOM NIGHTS AVAILABLE AND OCCUPIED:
HOTELS, MOTELS AND GUEST HOUSES,
SOUTH AUSTRALIA**



**MONTHLY OCCUPANCY RATES,
SOUTH AUSTRALIA**



**MONTHLY TAKINGS FROM ACCOMMODATION,
SOUTH AUSTRALIA**



CONTENTS

<i>Table</i>		<i>Page</i>
..	Main features	1
..	Diagrams	2
1	Summary of hotels, motels and guest houses with facilities, Adelaide Statistical Division and South Australia	4
2	Summary of caravan parks, Adelaide Statistical Division and South Australia	5
3	Summary of holiday flats, units and houses, South Australia	6
4	Summary of visitor hostels, South Australia	6
5	Hotels, motels and guest houses with facilities by star grading, South Australia	7
6	Hotels, motels and guest houses with facilities by statistical division, South Australia	8
7A	Licensed hotels and motels and guest houses with facilities: Statistical subdivisions and selected statistical local areas, South Australia	10
7B	Hotels, motels and guest houses with facilities: Statistical divisions and selected subdivisions and statistical local areas, South Australia	12
8	Holiday flats, units and houses: Statistical divisions and selected subdivisions, South Australia	14
9	Caravan parks by statistical division, South Australia	16
10	Caravan parks: Statistical divisions and selected subdivisions and statistical local areas, South Australia	18
11	Visitor hostels by statistical division, South Australia	20
..	Explanatory Notes	21
..	Appendix: Statistical divisions, subdivisions and statistical local areas, South Australia	24
..	Reference map: Statistical divisions and subdivisions, South Australia	26

TABLE 1 — SUMMARY OF HOTELS, MOTELS AND GUEST HOUSES WITH FACILITIES, SOUTH AUSTRALIA (a)

Particulars	Unit	Quarter ended				Year ended			
		September 1992	December 1992	March 1993	June 1993	September 1993	December 1993	December 1992	December 1993
ADELAIDE STATISTICAL DIVISION — TOTAL HOTELS, MOTELS AND GUEST HOUSES WITH FACILITIES									
Establishments	No.	123	123	122	120	118	114
Guest rooms	No.	5,404	5,428	5,411	5,355	5,351	5,379
Bed spaces	No.	14,805	14,508	14,460	14,130	14,171	14,278
Employment (persons)	No.	4,534	4,682	4,625	4,470	4,661	4,575
Room nights occupied	No.	247,239	275,826	262,410	250,832	267,684	289,899	1,037,542	1,070,825
Room occupancy rate	per cent	49.7	55.3	53.9	51.5	54.4	58.6	52.6	54.6
Guest nights	No.	390,771	452,155	435,075	401,917	424,563	472,171	1,670,942	1,733,726
Bed occupancy rate	per cent	28.7	33.9	33.4	31.3	32.6	36.0	31.3	33.3
Guest arrivals	No.	176,908	192,820	190,646	183,207	192,246	214,341	736,713	780,440
Average length of stay	days	2.2	2.3	2.3	2.2	2.2	2.2	2.3	2.2
Takings from accommodation	\$'000	19,441	24,985	21,534	20,222	22,633	26,696	86,578	91,085
SOUTH AUSTRALIA — LICENSED HOTELS WITH FACILITIES									
Establishments	No.	125	125	121	121	121	114
Guest rooms	No.	4,544	4,573	4,538	4,535	4,520	4,479
Bed spaces	No.	11,453	11,178	11,038	11,024	11,044	10,929
Employment (persons)	No.	5,110	5,213	5,175	4,988	5,196	5,134
Room nights occupied	No.	187,540	202,285	184,219	183,166	199,691	209,975	766,564	777,051
Room occupancy rate	per cent	44.9	48.1	45.1	44.4	48.0	51.0	46.3	47.1
Guest nights	No.	281,655	312,416	286,908	279,838	303,453	322,018	1,155,611	1,192,217
Bed occupancy rate	per cent	26.7	30.4	28.9	27.9	29.9	32.0	28.1	29.7
Guest arrivals	No.	152,478	148,573	139,321	142,377	152,231	157,554	576,339	591,483
Average length of stay	days	1.8	2.1	2.1	2.0	2.0	2.0	2.0	2.0
Takings from accommodation	\$'000	14,500	18,277	15,237	14,594	16,861	19,385	63,063	66,077
SOUTH AUSTRALIA — MOTELS AND GUEST HOUSES WITH FACILITIES									
Establishments	No.	241	242	242	239	236	228
Guest rooms	No.	6,199	6,190	6,201	6,097	6,084	6,171
Bed spaces	No.	19,105	19,023	19,055	18,609	18,653	18,935
Employment (persons)	No.	2,549	2,498	2,419	2,319	2,428	2,490
Room nights occupied	No.	258,333	270,585	268,962	263,474	256,703	282,651	1,066,121	1,071,790
Room occupancy rate	per cent	45.3	47.5	48.3	47.5	45.9	49.8	46.9	47.9
Guest nights	No.	449,850	485,658	491,656	463,249	440,431	502,482	1,907,283	1,897,818
Bed occupancy rate	per cent	25.6	27.8	28.7	27.4	25.7	28.9	27.3	27.7
Guest arrivals	No.	250,363	264,922	259,719	252,937	253,797	284,527	1,034,319	1,050,980
Average length of stay	days	1.8	1.8	1.9	1.8	1.7	1.8	1.8	1.8
Takings from accommodation	\$'000	15,934	17,785	16,973	16,581	16,272	18,711	67,346	68,536
SOUTH AUSTRALIA — TOTAL HOTELS, MOTELS AND GUEST HOUSES WITH FACILITIES									
Establishments	No.	366	367	363	360	357	342
Guest rooms	No.	10,743	10,763	10,739	10,632	10,604	10,650
Bed spaces	No.	30,558	30,201	30,093	29,633	29,697	29,864
Employment (persons)	No.	7,659	7,711	7,594	7,307	7,624	7,624
Room nights occupied	No.	445,873	472,870	453,181	446,640	456,394	492,626	1,832,685	1,848,841
Room occupancy rate	per cent	45.1	47.8	47.0	46.2	46.8	50.3	46.6	47.6
Guest nights	No.	731,505	798,074	778,564	743,087	743,884	824,500	3,062,894	3,090,035
Bed occupancy rate	per cent	26.0	28.7	28.8	27.6	27.2	30.0	27.6	28.4
Guest arrivals	No.	402,841	413,495	399,040	395,314	406,028	442,081	1,610,658	1,642,463
Average length of stay	days	1.8	1.9	2.0	1.9	1.8	1.9	1.9	1.9
Takings from accommodation	\$'000	30,435	36,063	32,210	31,175	33,133	38,096	130,409	134,613

(a) From December quarter 1993, establishments with fewer than 5 rooms have been formally excluded from the scope of this collection. See Explanatory Note 2 (page 21).

TABLE 2 — SUMMARY OF CARAVAN PARKS, SOUTH AUSTRALIA

Particulars	Unit	Quarter ended				Year ended			
		September 1992	December 1992	March 1993	June 1993	September 1993	December 1993	December 1992	December 1993
ADELAIDE STATISTICAL DIVISION — TOTAL CARAVAN PARKS									
Establishments	No.	26	26	26	26	26	26
Capacity									
On-site vans	No.	262	260	276	260	259	261
Other powered sites	No.	2,716	2,721	2,615	2,634	2,646	2,646
Unpowered sites	No.	380	387	398	418	418	410
Cabins, etc.	No.	360	360	360	367	369	369
<i>Total capacity</i>	<i>No.</i>	<i>3,718</i>	<i>3,728</i>	<i>3,649</i>	<i>3,679</i>	<i>3,692</i>	<i>3,686</i>
Sites occupied by long-term guests	No.	1,076	1,096	1,109	1,102	1,109	1,063
Other sites permanently reserved (a)	No.	14	24	21	34	30	31
Employment (persons)	No.	168	164	164	165	153	160
Site nights occupied (a)	No.	150,649	172,957	185,434	155,086	150,227	166,949	(a)	657,696
Site occupancy rate (a)	per cent	44.0	50.4	56.5	46.3	44.2	49.2	(a)	49.0
Takings from accommodation	\$'000	1,801	2,238	2,418	1,863	1,730	2,337	8,440	8,348
SOUTH AUSTRALIA — SHORT-TERM CARAVAN PARKS									
Establishments	No.	174	173	171	170	168	167
Capacity									
On-site vans	No.	995	982	954	935	934	939
Other powered sites	No.	12,483	12,374	12,093	12,089	12,021	11,994
Unpowered sites	No.	6,003	5,919	5,881	5,798	5,810	5,736
Cabins, etc.	No.	1,180	1,187	1,231	1,216	1,227	1,256
<i>Total capacity</i>	<i>No.</i>	<i>20,661</i>	<i>20,462</i>	<i>20,159</i>	<i>20,038</i>	<i>19,992</i>	<i>19,925</i>
Sites occupied by long-term guests	No.	709	674	643	632	605	585
Other sites permanently reserved (a)	No.	1,145	1,343	1,330	1,359	1,437	1,467
Employment (persons)	No.	623	630	645	607	584	593
Site nights occupied (a)	No.	337,870	415,362	483,249	415,132	352,153	427,273	(a)	1,677,807
Site occupancy rate (a)	per cent	17.8	22.1	26.6	22.8	19.1	23.4	(a)	23.0
Takings from accommodation	\$'000	3,901	5,167	6,084	4,961	3,916	5,370	19,637	20,331
SOUTH AUSTRALIA — LONG-TERM CARAVAN PARKS									
Establishments	No.	37	38	40	41	43	44
Capacity									
On-site vans	No.	213	210	251	242	252	252
Other powered sites	No.	2,416	2,439	2,732	2,736	2,795	2,836
Unpowered sites	No.	887	835	985	1,031	1,071	1,046
Cabins, etc.	No.	344	361	339	387	390	389
<i>Total capacity</i>	<i>No.</i>	<i>3,860</i>	<i>3,845</i>	<i>4,307</i>	<i>4,396</i>	<i>4,508</i>	<i>4,523</i>
Sites occupied by long-term guests	No.	1,291	1,309	1,380	1,366	1,399	1,364
Other sites permanently reserved (a)	No.	12	31	33	31	30	29
Employment (persons)	No.	137	144	148	155	145	156
Site nights occupied (a)	No.	137,575	151,101	153,121	161,925	152,778	155,419	(a)	623,243
Site occupancy rate (a)	per cent	38.7	42.7	39.5	40.5	36.8	37.3	(a)	38.5
Takings from accommodation	\$'000	1,228	1,348	1,430	1,564	1,415	1,549	5,333	5,958
SOUTH AUSTRALIA — TOTAL CARAVAN PARKS									
Establishments	No.	211	211	211	211	211	211
Capacity									
On-site vans	No.	1,208	1,192	1,205	1,177	1,186	1,191
Other powered sites	No.	14,899	14,813	14,825	14,825	14,816	14,830
Unpowered sites	No.	6,890	6,754	6,866	6,829	6,881	6,782
Cabins, etc.	No.	1,524	1,548	1,570	1,603	1,617	1,645
<i>Total capacity</i>	<i>No.</i>	<i>24,521</i>	<i>24,307</i>	<i>24,466</i>	<i>24,434</i>	<i>24,500</i>	<i>24,448</i>
Sites occupied by long-term guests	No.	2,000	1,983	2,023	1,998	2,004	1,949
Other sites permanently reserved (a)	No.	1,157	1,374	1,363	1,390	1,467	1,496
Employment (persons)	No.	760	774	793	762	729	749
Site nights occupied (a)	No.	475,445	566,463	636,370	577,057	504,931	582,692	(a)	2,301,050
Site occupancy rate (a)	per cent	21.1	25.3	28.9	26.0	22.4	26.0	(a)	25.8
Takings from accommodation	\$'000	5,129	6,515	7,514	6,525	5,331	6,918	24,970	26,289

(a) From September quarter 1992, caravan park sites, etc. permanently reserved but only casually occupied by their tenants have been recorded continuously as site nights occupied irrespective of whether the tenants of individual sites were in residence on any particular night. See Explanatory Notes 11 and 14. Occupancy measures from September quarter 1992 are therefore not comparable with those from previous quarters.

TABLE 3 — SUMMARY OF HOLIDAY FLATS, UNITS AND HOUSES, SOUTH AUSTRALIA

Particulars	Unit	Quarter ended				Year ended			
		September 1992	December 1992	March 1993	June 1993	September 1993	December 1993	December 1992	December 1993
Letting entities	No.	84	84	83	86	87	87
Flats, units and houses									
Single bedroom	No.	360	357	359	370	366	360
Multiple bedroom	No.	919	966	954	968	996	1,017
<i>Total flats, units and houses</i>	<i>No.</i>	<i>1,279</i>	<i>1,323</i>	<i>1,313</i>	<i>1,338</i>	<i>1,362</i>	<i>1,377</i>	<i>..</i>	<i>..</i>
Bed spaces	No.	6,169	6,498	6,491	6,621	6,747	6,865
Employment (persons) (a)	No.	240	249	248	270	260	266
Unit nights occupied	No.	40,039	48,675	58,970	44,833	43,696	52,563	190,496	200,062
Unit occupancy rate	per cent	34.0	40.0	49.9	36.8	35.2	41.6	39.9	40.8
Unit lettings	No.	9,237	9,805	10,097	9,061	9,493	10,375	37,370	39,026
Average length of stay	days	4.3	5.0	5.8	4.9	4.6	5.1	5.1	5.1
Takings from accommodation	\$'000	2,213	2,905	3,263	2,359	2,551	3,290	10,637	11,463

(a) Employment numbers exclude real estate agents and their employees.

TABLE 4 — SUMMARY OF VISITOR HOSTELS, SOUTH AUSTRALIA

Particulars	Unit	Quarter ended				Year ended			
		September 1992	December 1992	March 1993	June 1993	September 1993	December 1993	December 1992	December 1993
Establishments	No.	35	40	41	40	42	42
Bed spaces	No.	1,635	1,992	1,970	1,955	2,029	2,037
Employment (persons)	No.	106	134	127	125	121	123
Guest nights	No.	45,545	55,064	59,084	44,937	47,999	59,296	203,514	211,316
Bed occupancy rate	per cent	30.5	30.0	33.6	25.3	25.9	31.6	33.2	29.1
Guest arrivals	No.	28,345	27,981	32,142	22,577	28,272	27,628	103,304	110,619
Average length of stay	days	1.6	2.0	1.8	2.0	1.7	2.1	2.0	1.9
Takings from accommodation	\$'000	370	558	598	471	432	638	2,005	2,139

TABLE 5 — HOTELS, MOTELS AND GUEST HOUSES WITH FACILITIES BY STAR GRADING,
SOUTH AUSTRALIA (a)

Particulars	Star grading						Total
	1	2	3	4	5	Ungraded	
ESTABLISHMENTS, CAPACITY AND EMPLOYMENT							
<i>December quarter 1992—</i>							
Establishments	17	156	138	16	3	37	367
Guest rooms	201	3,302	4,759	1,068	1,083	350	10,763
Bed spaces	428	9,285	14,049	3,367	2,166	906	30,201
Employment (persons)	260	2,264	2,640	877	1,010	660	7,711
<i>December quarter 1993—</i>							
Establishments	13	148	137	17	3	24	342
Guest rooms	179	3,314	4,670	1,111	1,083	293	10,650
Bed spaces	370	9,348	13,818	3,408	2,166	754	29,864
Employment (persons)	241	2,137	2,583	1,030	1,058	575	7,624
ROOM NIGHTS OCCUPIED							
<i>December quarter 1992</i>	3,523	112,612	222,992	63,502	59,708	10,533	472,870
<i>1993—</i>							
October	1,517	44,943	85,846	24,993	24,116	3,489	184,904
November	1,237	38,073	79,284	26,065	24,525	3,596	172,780
December	970	33,769	61,489	19,907	15,963	2,844	134,942
<i>December quarter 1993</i>	3,724	116,785	226,619	70,965	64,604	9,929	492,626
ROOM OCCUPANCY RATES (per cent)							
<i>December quarter 1992</i>	19.1	37.1	50.9	64.6	59.9	33.4	47.8
<i>1993—</i>							
October	27.3	43.8	59.3	72.6	71.8	38.4	56.0
November	23.0	38.3	56.6	78.2	75.5	40.9	54.1
December	17.5	32.9	42.6	57.8	47.5	31.3	40.9
<i>December quarter 1993</i>	22.6	38.3	52.8	69.4	64.8	36.8	50.3
GUEST NIGHTS							
<i>December quarter 1992</i>	4,801	202,937	385,314	104,696	83,306	17,020	798,074
<i>1993—</i>							
October	1,986	78,696	150,933	40,331	34,206	4,825	310,977
November	1,686	62,580	130,538	40,224	34,491	4,938	274,457
December	1,284	61,573	114,809	34,056	23,416	3,928	239,066
<i>December quarter 1993</i>	4,956	202,849	396,280	114,611	92,113	13,691	824,500
BED OCCUPANCY RATES (per cent)							
<i>December quarter 1992</i>	12.2	23.8	29.8	33.8	41.8	20.9	28.7
<i>1993—</i>							
October	17.3	27.2	35.2	38.2	50.9	20.6	33.6
November	15.2	22.3	31.5	39.3	53.1	21.8	30.6
December	11.2	21.2	26.8	32.2	34.9	16.8	25.8
<i>December quarter 1993</i>	14.6	23.6	31.2	36.6	46.2	19.7	30.0
GUEST ARRIVALS							
<i>December quarter 1992</i>	2,621	118,168	207,591	39,938	36,455	8,722	413,495
<i>1993—</i>							
October	1,068	47,483	86,012	17,506	15,032	2,072	169,173
November	815	35,932	71,033	16,983	14,497	2,246	141,506
December	777	37,884	63,519	16,015	11,370	1,837	131,402
<i>December quarter 1993</i>	2,660	121,299	220,564	50,504	40,899	6,155	442,081
AVERAGE LENGTH OF STAY (days)							
<i>December quarter 1992</i>	1.8	1.7	1.9	2.6	2.3	2.0	1.9
<i>December quarter 1993</i>	1.9	1.7	1.8	2.3	2.3	2.2	1.9
TAKINGS FROM ACCOMMODATION (\$'000)							
<i>December quarter 1992</i>	90	5,326	15,397	6,514	8,122	614	36,063
<i>1993—</i>							
October	39	2,111	5,643	2,503	2,990	174	13,461
November	36	1,849	5,829	3,085	3,967	210	14,975
December	28	1,595	4,066	1,980	1,860	131	9,660
<i>December quarter 1993</i>	103	5,555	15,538	7,568	8,816	516	38,096

(a) From December quarter 1993, establishments with fewer than 5 rooms have been formally excluded from the scope of this collection. See Explanatory Note 2 (page 21).

TABLE 6 — HOTELS, MOTELS AND GUEST HOUSES WITH FACILITIES BY STATISTICAL DIVISION,
SOUTH AUSTRALIA (a)

Particulars	Adelaide (SD)			Outer Adelaide (SD)			Yorke and Lower North (SD)			Murray Lands (SD)		
	Licensed hotels	Motels, etc.	Total	Licensed hotels	Motels, etc.	Total	Licensed hotels	Motels, etc.	Total	Licensed hotels	Motels, etc.	Total
ESTABLISHMENTS, CAPACITY AND EMPLOYMENT												
<i>December quarter 1992—</i>												
Establishments	59	64	123	7	46	53	9	18	27	11	23	34
Guest rooms	2,796	2,632	5,428	239	794	1,033	117	267	384	440	411	851
Bed spaces	6,436	8,072	14,508	769	2,532	3,301	333	802	1,135	1,064	1,293	2,357
Employment (persons)	3,659	1,023	4,682	303	372	675	66	124	190	350	139	489
<i>December quarter 1993—</i>												
Establishments	51	63	114	8	36	44	8	16	24	10	23	33
Guest rooms	2,746	2,633	5,379	245	741	986	116	262	378	409	409	818
Bed spaces	6,279	7,999	14,278	768	2,356	3,124	326	810	1,136	1,029	1,288	2,317
Employment (persons)	3,529	1,046	4,575	307	354	661	70	112	182	403	135	538
ROOM NIGHTS OCCUPIED												
<i>December quarter 1992</i>	145,054	130,772	275,826	9,949	31,270	41,219	2,569	11,636	14,205	11,892	15,098	26,990
<i>1993—</i>												
October	54,376	50,545	104,921	4,393	11,252	15,645	999	4,259	5,258	5,216	6,458	11,674
November	56,795	50,053	106,848	3,673	10,215	13,888	708	3,588	4,296	4,490	4,801	9,291
December	39,857	38,273	78,130	3,314	9,847	13,161	889	3,187	4,076	3,169	4,539	7,708
<i>December quarter 1993</i>	151,028	138,871	289,899	11,380	31,314	42,694	2,596	11,034	13,630	12,875	15,798	28,673
ROOM OCCUPANCY RATES (per cent)												
<i>December quarter 1992</i>	56.5	54.0	55.3	45.2	42.8	43.4	23.9	47.4	40.2	29.4	39.9	34.5
<i>1993—</i>												
October	63.9	62.1	63.0	57.8	49.0	51.2	27.8	52.4	44.9	41.1	50.9	46.0
November	68.9	63.4	66.2	50.0	46.0	47.0	20.3	45.6	37.9	36.6	39.1	37.9
December	47.0	46.9	46.9	43.6	42.9	43.1	24.7	39.2	34.8	25.0	35.8	30.4
<i>December quarter 1993</i>	59.9	57.4	58.6	50.5	45.9	47.1	24.3	45.8	39.2	34.2	42.0	38.1
GUEST NIGHTS												
<i>December quarter 1992</i>	217,815	234,340	452,155	20,657	64,672	85,329	4,392	20,441	24,833	18,692	28,787	47,479
<i>1993—</i>												
October	81,304	89,471	170,775	9,216	22,676	31,892	1,523	8,184	9,707	8,216	11,811	20,027
November	82,474	84,926	167,400	7,232	19,363	26,595	989	6,223	7,212	6,326	8,388	14,714
December	61,660	72,336	133,996	7,284	21,074	28,358	1,356	6,284	7,640	4,949	9,224	14,173
<i>December quarter 1993</i>	225,438	246,733	472,171	23,732	63,113	86,845	3,868	20,691	24,559	19,491	29,423	48,914
BED OCCUPANCY RATES (per cent)												
<i>December quarter 1992</i>	36.8	31.6	33.9	29.2	27.8	28.1	14.3	27.7	23.8	19.1	24.2	21.9
<i>1993—</i>												
October	41.8	36.2	38.6	38.7	31.0	32.9	15.1	32.6	27.6	25.8	29.6	27.9
November	43.8	35.4	39.1	31.4	27.4	28.4	10.1	25.6	21.2	20.5	21.7	21.2
December	31.8	29.2	30.3	30.6	28.9	29.3	13.4	25.0	21.7	15.5	23.1	19.7
<i>December quarter 1993</i>	39.1	33.6	36.0	33.6	29.1	30.2	12.9	27.8	23.5	20.6	24.8	22.9
GUEST ARRIVALS												
<i>December quarter 1992</i>	88,029	104,791	192,820	12,538	36,082	48,620	2,328	14,177	16,505	11,608	20,358	31,966
<i>1993—</i>												
October	33,823	44,896	78,719	5,398	12,972	18,370	966	5,587	6,553	5,793	8,231	14,024
November	33,115	38,904	72,019	4,543	11,092	15,635	587	4,583	5,170	4,286	6,152	10,438
December	27,454	36,149	63,603	4,485	11,808	16,293	729	4,079	4,808	3,276	6,335	9,611
<i>December quarter 1993</i>	94,392	119,949	214,341	14,426	35,872	50,298	2,282	14,249	16,531	13,355	20,718	34,073
AVERAGE LENGTH OF STAY (days)												
<i>December quarter 1992</i>	2.5	2.2	2.3	1.6	1.8	1.8	1.9	1.4	1.5	1.6	1.4	1.5
<i>December quarter 1993</i>	2.4	2.1	2.2	1.6	1.8	1.7	1.7	1.5	1.5	1.5	1.4	1.4
TAKINGS FROM ACCOMMODATION (\$'000)												
<i>December quarter 1992</i>	15,373	9,612	24,985	719	2,136	2,855	80	646	726	506	792	1,298
<i>1993—</i>												
October	5,493	3,517	9,010	280	756	1,036	37	240	277	229	349	578
November	7,167	4,154	11,321	232	689	921	25	198	223	193	257	449
December	3,794	2,571	6,365	224	678	902	31	176	207	140	247	388
<i>December quarter 1993</i>	16,454	10,242	26,696	736	2,124	2,859	93	614	707	562	853	1,415

TABLE 6 — HOTELS, MOTELS AND GUEST HOUSES WITH FACILITIES BY STATISTICAL DIVISION,
SOUTH AUSTRALIA (a)—continued

Particulars	South East (SD)			Eyre (SD)			Northern (SD)			South Australia		
	Licensed hotels	Motels, etc.	Total	Licensed hotels	Motels, etc.	Total	Licensed hotels	Motels, etc.	Total	Licensed hotels	Motels, etc.	Total
ESTABLISHMENTS, CAPACITY AND EMPLOYMENT												
<i>December quarter 1992—</i>												
Establishments	10	44	54	12	18	30	17	29	46	125	242	367
Guest rooms	167	987	1,154	265	366	631	549	733	1,282	4,573	6,190	10,763
Bed spaces	412	3,058	3,470	680	1,059	1,739	1,484	2,207	3,691	11,178	19,023	30,201
Employment (persons)	195	375	570	247	157	404	393	308	701	5,213	2,498	7,711
<i>December quarter 1993—</i>												
Establishments	9	43	52	12	18	30	16	29	45	114	228	342
Guest rooms	166	1,002	1,168	257	368	625	540	756	1,296	4,479	6,171	10,650
Bed spaces	404	3,117	3,521	657	1,085	1,742	1,466	2,280	3,746	10,929	18,935	29,864
Employment (persons)	193	382	575	259	137	396	373	324	697	5,134	2,490	7,624
ROOM NIGHTS OCCUPIED												
<i>December quarter 1992</i>	6,543	38,594	45,137	7,771	12,321	20,092	18,507	30,894	49,401	202,285	270,585	472,870
<i>1993—</i>												
October	2,452	15,420	17,872	3,088	4,628	7,716	7,907	13,911	21,818	78,431	106,473	184,904
November	2,037	14,120	16,157	2,391	3,615	6,006	5,853	10,441	16,294	75,947	96,833	172,780
December	1,663	11,496	13,159	2,337	3,690	6,027	4,368	8,313	12,681	55,597	79,345	134,942
<i>December quarter 1993</i>	6,152	41,036	47,188	7,816	11,933	19,749	18,128	32,665	50,793	209,975	282,651	492,626
ROOM OCCUPANCY RATES (per cent)												
<i>December quarter 1992</i>	42.6	42.5	42.5	31.9	36.6	34.6	36.6	46.1	42.0	48.1	47.5	47.8
<i>1993—</i>												
October	47.6	49.6	49.4	38.8	40.6	39.8	47.2	59.4	54.3	56.5	55.7	56.0
November	40.9	47.0	46.1	31.0	32.7	32.0	36.1	46.0	41.9	56.5	52.3	54.1
December	32.3	37.0	36.3	29.3	32.3	31.1	26.1	35.5	31.6	40.1	41.5	40.9
<i>December quarter 1993</i>	40.3	44.5	43.9	33.1	35.2	34.3	36.5	47.0	42.6	51.0	49.8	50.3
GUEST NIGHTS												
<i>December quarter 1992</i>	9,327	65,285	74,612	12,383	21,358	33,741	29,150	50,775	79,925	312,416	485,658	798,074
<i>1993—</i>												
October	3,329	26,477	29,806	4,784	7,858	12,642	12,931	23,197	36,128	121,303	189,674	310,977
November	2,676	22,229	24,905	3,643	5,345	8,988	8,812	15,831	24,643	112,152	162,305	274,457
December	2,422	20,218	22,640	3,894	6,904	10,798	6,998	14,463	21,461	88,563	150,503	239,066
<i>December quarter 1993</i>	8,427	68,924	77,351	12,321	20,107	32,428	28,741	53,491	82,232	322,018	502,482	824,500
BED OCCUPANCY RATES (per cent)												
<i>December quarter 1992</i>	24.6	23.2	23.4	19.8	21.9	21.1	21.4	25.2	23.6	30.4	27.8	28.7
<i>1993—</i>												
October	26.6	27.4	27.3	23.5	23.4	23.4	28.5	32.8	31.1	35.8	32.3	33.6
November	22.1	23.8	23.6	18.5	16.4	17.2	20.0	23.1	21.9	34.2	28.6	30.6
December	19.3	20.9	20.7	19.1	20.5	20.0	15.4	20.5	18.5	26.2	25.6	25.8
<i>December quarter 1993</i>	22.7	24.0	23.9	20.4	20.1	20.2	21.3	25.5	23.9	32.0	28.9	30.0
GUEST ARRIVALS												
<i>December quarter 1992</i>	5,391	42,506	47,897	8,453	15,291	23,744	20,226	31,717	51,943	148,573	264,922	413,495
<i>1993—</i>												
October	1,826	16,920	18,746	3,359	5,823	9,182	8,681	14,898	23,579	59,846	109,327	169,173
November	1,718	14,273	15,991	2,541	3,711	6,252	5,696	10,305	16,001	52,486	89,020	141,506
December	1,511	13,517	15,028	2,917	4,920	7,837	4,850	9,372	14,222	45,222	86,180	131,402
<i>December quarter 1993</i>	5,055	44,710	49,765	8,817	14,454	23,271	19,227	34,575	53,802	157,554	284,527	442,081
AVERAGE LENGTH OF STAY (days)												
<i>December quarter 1992</i>	1.7	1.5	1.6	1.5	1.4	1.4	1.4	1.6	1.5	2.1	1.8	1.9
<i>December quarter 1993</i>	1.7	1.5	1.6	1.4	1.4	1.4	1.5	1.5	1.5	2.0	1.8	1.9
TAKINGS FROM ACCOMMODATION (\$'000)												
<i>December quarter 1992</i>	230	2,088	2,318	367	658	1,025	1,003	1,854	2,856	18,277	17,785	36,063
<i>1993—</i>												
October	82	833	915	148	246	393	406	844	1,250	6,676	6,785	13,461
November	76	753	830	114	192	306	289	636	925	8,096	6,879	14,975
December	59	650	709	121	206	327	244	517	761	4,613	5,047	9,660
<i>December quarter 1993</i>	218	2,237	2,454	383	644	1,027	939	1,997	2,937	19,385	18,711	38,096

(a) From December quarter 1993, establishments with fewer than 5 rooms have been formally excluded from the scope of this collection. See Explanatory Note 2 (page 21).

TABLE 7A — LICENSED HOTELS AND MOTELS AND GUEST HOUSES WITH FACILITIES: STATISTICAL

Statistical Subdivisions and selected Statistical Local Areas	Establish- ments	Guest rooms	Bed spaces	Employ- ment (persons)	Room nights occupied				Room occupancy rates (per cent)			
					Oct.	Nov.	Dec.	Dec. qtr	Oct.	Nov.	Dec.	Dec. qtr
LICENSED HOTELS WITH FACILITIES												
Northern and Southern (SSDs)	22	479	1,340	1,277	7,675	8,628	7,194	23,497	51.7	60.0	48.4	53.3
Western (SSD)	11	191	407	352	2,707	2,954	2,422	8,083	45.7	51.6	40.9	46.0
Adelaide (C)	12	1,982	4,269	1,619	42,732	43,861	29,278	115,871	69.5	73.8	47.7	63.5
Eastern (SSD) — Balance	6	94	263	281	1,262	1,352	963	3,577	43.3	47.9	37.0	42.9
Eastern (SSD)	18	2,076	4,532	1,900	43,994	45,213	30,241	119,448	68.4	72.6	47.2	62.6
Barossa (SSD)	4	77	230	93	1,319	1,178	874	3,371	55.3	51.0	36.6	47.6
Kangaroo Island, Onkaparinga, Fleurieu, Yorke and Lower North (SSDs)	12	284	864	284	4,073	3,203	3,329	10,605	46.3	37.6	37.8	40.6
Riverland (SSD)	6	359	927	350	4,776	4,048	2,885	11,709	42.9	37.6	25.9	35.5
Murray Mallee (SSD)	4	50	102	53	440	442	284	1,166	28.4	29.5	18.3	25.3
Upper South East (SSD)	4	81	203	89	815	747	543	2,105	32.5	30.7	21.6	28.2
Lower South East (SSD)	5	85	201	104	1,637	1,290	1,120	4,047	62.1	50.6	42.5	51.8
Lincoln (SSD)	8	123	282	151	1,580	1,265	1,091	3,936	41.4	34.3	28.6	34.8
West Coast (SSD)	4	134	375	108	1,508	1,126	1,246	3,880	36.3	28.0	30.0	31.5
Whyalla (SSD)	7	171	416	208	2,843	2,620	1,769	7,232	53.6	51.1	33.4	46.0
Flinders Ranges (SSD)	4	89	252	46	1,540	697	480	2,717	55.8	26.1	17.4	33.2
Pirie and Far North (SSDs)	5	280	798	119	3,524	2,536	2,119	8,179	40.6	30.2	24.4	31.8
<i>Total South Australia</i>	<i>114</i>	<i>4,479</i>	<i>10,929</i>	<i>5,134</i>	<i>78,431</i>	<i>75,947</i>	<i>55,597</i>	<i>209,975</i>	<i>56.5</i>	<i>56.5</i>	<i>40.1</i>	<i>51.0</i>
MOTELS AND GUEST HOUSES WITH FACILITIES												
Northern and Southern (SSDs)	23	833	2,574	325	14,200	14,185	10,948	39,333	55.0	56.8	42.4	51.3
Western (SSD)	4	114	327	39	1,879	1,817	1,488	5,184	53.2	53.1	42.1	49.4
Adelaide (C)	16	936	2,713	430	21,087	21,181	15,544	57,812	72.7	75.4	53.6	67.1
Eastern (SSD) — Balance	20	750	2,385	252	13,379	12,870	10,293	36,542	58.0	57.2	44.3	53.1
Eastern (SSD)	36	1,686	5,098	682	34,466	34,051	25,837	94,354	66.2	67.3	49.4	60.9
Barossa (SSD)	9	191	540	110	3,227	2,821	2,335	8,383	54.5	49.2	39.4	47.7
Kangaroo Island, Onkaparinga, Fleurieu, Yorke and Lower North (SSDs)	43	812	2,626	356	12,284	10,982	10,699	33,965	48.8	45.1	42.5	45.5
Riverland (SSD)	13	246	797	86	3,623	2,571	2,369	8,563	47.5	34.8	31.1	37.8
Murray Mallee (SSD)	10	163	491	49	2,835	2,230	2,170	7,235	56.1	45.6	42.9	48.2
Robe (DC)	6	93	319	40	885	907	905	2,697	30.7	32.5	31.4	31.5
Lacepede (DC)	3	51	163	16	488	417	464	1,369	30.9	27.3	29.3	29.2
Upper South East (SSD) — Balance	8	166	477	53	2,547	2,419	1,980	6,946	49.5	48.6	38.5	45.5
Upper South East (SSD)	17	310	959	109	3,920	3,743	3,349	11,012	40.8	40.2	34.8	38.6
Lower South East (SSD)	26	692	2,158	273	11,500	10,377	8,147	30,024	53.6	50.0	38.0	47.2
Lincoln (SSD)	13	222	644	67	2,974	2,445	2,280	7,699	43.2	36.7	33.1	37.7
West Coast (SSD)	5	146	441	70	1,654	1,170	1,410	4,234	36.5	26.7	31.2	31.5
Whyalla (SSD)	5	117	339	61	2,027	1,724	1,449	5,200	55.9	49.1	40.0	48.3
Flinders Ranges (SSD)	12	379	1,226	151	7,339	5,083	4,000	16,422	62.5	44.7	34.0	47.1
Pirie and Far North (SSDs)	12	260	715	112	4,545	3,634	2,864	11,043	56.4	46.6	35.5	46.2
<i>Total South Australia</i>	<i>228</i>	<i>6,171</i>	<i>18,935</i>	<i>2,490</i>	<i>106,473</i>	<i>96,833</i>	<i>79,345</i>	<i>282,651</i>	<i>55.7</i>	<i>52.3</i>	<i>41.5</i>	<i>49.8</i>

(a) From December quarter 1993, establishments with fewer than 5 rooms have been formally excluded from the scope of this collection. See Explanatory Note 2 (page 21).

SUBDIVISIONS AND SELECTED STATISTICAL LOCAL AREAS, SOUTH AUSTRALIA, DECEMBER QUARTER 1993 (a)

<i>Guest nights</i>				<i>Guest arrivals</i>				<i>Takings from accommodation (\$'000)</i>			
<i>Oct.</i>	<i>Nov.</i>	<i>Dec.</i>	<i>Dec. qtr</i>	<i>Oct.</i>	<i>Nov.</i>	<i>Dec.</i>	<i>Dec. qtr</i>	<i>Oct.</i>	<i>Nov.</i>	<i>Dec.</i>	<i>Dec. qtr</i>
LICENSED HOTELS WITH FACILITIES											
12,496	13,379	11,509	37,384	4,179	4,003	4,153	12,335	765	929	637	2,331
3,498	3,799	3,044	10,341	1,590	1,335	1,436	4,361	129	174	128	431
63,456	63,376	45,657	172,489	27,100	26,751	21,084	74,935	4,499	5,920	2,951	13,370
1,854	1,920	1,450	5,224	954	1,026	781	2,761	100	144	78	322
65,310	65,296	47,107	177,713	28,054	27,777	21,865	77,696	4,599	6,064	3,029	13,692
2,441	1,970	1,577	5,988	1,586	1,380	1,103	4,069	69	59	44	172
8,298	6,251	7,063	21,612	4,778	3,750	4,111	12,639	248	198	211	658
7,646	5,785	4,619	18,050	5,475	4,001	3,083	12,559	213	176	130	519
570	541	330	1,441	318	285	193	796	16	16	11	43
1,188	1,104	840	3,132	910	815	661	2,386	33	28	20	81
2,141	1,572	1,582	5,295	916	903	850	2,669	50	48	39	137
2,063	1,637	1,401	5,101	918	733	675	2,326	65	52	43	160
2,721	2,006	2,493	7,220	2,441	1,808	2,242	6,491	83	62	78	223
3,625	3,135	2,227	8,987	1,441	1,086	805	3,332	98	90	82	270
2,736	1,077	759	4,572	2,162	819	661	3,642	67	29	18	114
6,570	4,600	4,012	15,182	5,078	3,791	3,384	12,253	241	171	144	555
121,303	112,152	88,563	322,018	59,846	52,486	45,222	157,554	6,676	8,096	4,613	19,385
MOTELS AND GUEST HOUSES WITH FACILITIES											
25,743	24,354	21,880	71,977	13,812	10,993	10,339	35,144	958	1,135	750	2,843
3,009	2,640	2,299	7,948	1,764	1,591	1,555	4,910	137	157	106	400
33,947	33,108	26,453	93,508	16,838	15,879	12,784	45,501	1,637	1,925	1,133	4,694
26,772	24,824	21,704	73,300	12,482	10,441	11,471	34,394	785	938	582	2,305
60,719	57,932	48,157	166,808	29,320	26,320	24,255	79,895	2,422	2,863	1,715	6,999
6,061	5,214	4,594	15,869	3,707	3,442	3,080	10,229	206	187	162	555
24,799	20,372	22,764	67,935	14,852	12,233	12,807	39,892	790	700	692	2,182
6,651	4,433	5,099	16,183	4,176	3,049	3,279	10,504	208	148	141	497
5,160	3,955	4,125	13,240	4,055	3,103	3,056	10,214	141	109	106	356
1,941	1,776	2,055	5,772	1,478	1,315	1,369	4,162	43	43	52	138
896	911	791	2,598	846	855	714	2,415	21	22	20	62
4,392	3,536	3,244	11,172	3,361	2,742	2,667	8,770	126	117	97	340
7,229	6,223	6,090	19,542	5,685	4,912	4,750	15,347	189	182	169	541
19,248	16,006	14,128	49,382	11,235	9,361	8,767	29,363	644	571	481	1,696
4,883	3,543	3,925	12,351	3,358	2,349	2,409	8,116	157	130	127	414
2,975	1,802	2,979	7,756	2,465	1,362	2,511	6,338	89	62	79	230
2,761	2,182	1,931	6,874	1,776	1,363	1,203	4,342	124	114	94	332
13,251	8,410	8,174	29,835	7,814	5,253	5,055	18,122	445	310	253	1,008
7,185	5,239	4,358	16,782	5,308	3,689	3,114	12,111	275	212	170	657
189,674	162,305	150,503	502,482	109,327	89,020	86,180	284,527	6,785	6,879	5,047	18,711

TABLE 7B — HOTELS, MOTELS AND GUEST HOUSES WITH FACILITIES: STATISTICAL DIVISIONS AND SELECTED

Statistical Divisions and selected Subdivisions and Statistical Local Areas	Establish- ments	Guest rooms	Bed spaces	Employ- ment (persons)	Room nights occupied				Room occupancy rates (per cent)			
					Oct.	Nov.	Dec.	Dec. qtr	Oct.	Nov.	Dec.	Dec. qtr
Salisbury (C)	6	90	266	179	1,327	1,405	1,157	3,889	47.6	52.0	41.5	47.0
Tea Tree Gully (C)	3	22	61	82	144	192	257	593	21.1	29.1	37.7	29.3
Northern (SSD) — Balance	9	283	755	188	3,455	3,546	2,598	9,599	39.4	41.8	29.6	36.9
Woodville (C)	6	125	283	180	2,030	1,976	1,506	5,512	52.4	52.7	38.9	47.9
Western (SSD) — Balance	9	180	451	211	2,556	2,795	2,404	7,755	45.8	51.8	43.1	46.8
Adelaide (C)	28	2,918	6,982	2,049	63,819	65,042	44,822	173,683	70.6	74.3	49.6	64.7
Burnside (C)	9	311	986	125	5,378	4,929	4,395	14,702	56.9	52.8	45.6	51.7
Kensington and Norwood (C)	3	161	486	58	2,572	2,601	1,677	6,850	51.5	53.9	33.6	46.2
Unley (C)	7	214	707	154	4,306	4,099	3,074	11,479	64.9	63.8	46.3	58.3
Eastern (SSD) — Balance	7	158	469	196	2,385	2,593	2,110	7,088	48.7	54.7	46.0	49.8
Glenslg (C)	13	655	2,005	747	13,019	13,468	10,397	36,884	64.1	68.5	51.2	61.2
Marion (C)	5	77	236	204	1,017	1,173	963	3,153	42.6	50.8	40.3	44.5
Southern (SSD) — Balance	9	185	591	202	2,913	3,029	2,770	8,712	50.8	54.6	48.3	51.2
Adelaide (SD)	114	5,379	14,278	4,575	104,921	106,848	78,130	289,899	63.0	66.2	46.9	58.6
Tanunda (DC)	5	135	407	96	2,274	2,183	1,671	6,128	54.3	53.9	39.9	49.3
Barossa (SSD) — Balance	8	133	363	107	2,272	1,816	1,538	5,626	55.1	45.5	37.3	46.0
Dudley (DC)	4	91	270	35	1,223	1,149	1,331	3,703	43.4	42.1	47.2	44.2
Kingscote (DC)	5	108	298	84	2,228	1,833	1,841	5,902	66.5	56.6	55.0	59.4
Port Elliot and Goolwa (DC)	4	74	242	26	573	549	793	1,915	25.0	24.7	34.6	28.1
Victor Harbor (DC)	10	205	666	117	3,259	2,721	2,793	8,773	51.3	44.2	43.9	46.5
Outer Adelaide (SD) — Balance	8	240	878	196	3,816	3,637	3,194	10,647	51.3	50.5	42.9	48.2
Outer Adelaide (SD)	44	986	3,124	661	15,645	13,888	13,161	42,694	51.2	47.0	43.1	47.1
Northern Yorke Peninsula (DC)	3	50	178	21	877	656	594	2,127	56.6	43.7	38.3	46.2
Walleroo (M)	3	64	200	18	551	474	609	1,634	27.8	24.7	30.7	27.8
Yorketown (DC)	5	59	183	23	838	637	750	2,225	45.8	36.0	41.0	41.0
Clare (DC)	5	101	272	65	1,815	1,599	1,117	4,531	58.0	52.8	35.7	48.8
Yorke and Lower North (SD) — Balance	8	104	303	55	1,177	930	1,006	3,113	36.5	29.8	31.2	32.5
Yorke and Lower North (SD)	24	378	1,136	182	5,258	4,296	4,076	13,630	44.9	37.9	34.8	39.2
Barrera (DC)	3	115	328	50	1,390	1,032	993	3,415	39.0	29.9	27.9	32.3
Renmark (M)	5	209	560	103	2,609	2,028	1,538	6,175	40.3	32.3	23.7	32.1
Riverland (SSD) — Balance	11	281	836	283	4,400	3,559	2,723	10,682	50.5	42.2	31.3	41.3
Meningie (DC)	4	45	110	17	614	513	512	1,639	44.0	38.0	36.7	39.6
Murray Bridge (RC)	5	90	264	42	1,691	1,517	1,132	4,340	60.6	56.2	40.6	52.4
Murray Mallee (SSD) — Balance	5	78	219	43	970	642	810	2,422	40.1	27.4	33.5	33.8
Murray Lands (SD)	33	818	2,317	538	11,674	9,291	7,708	28,673	46.0	37.9	30.4	38.1
Lacepede (DC)	3	51	163	16	488	417	464	1,369	30.9	27.3	29.3	29.2
Naracoorte (M)	6	112	298	71	1,287	1,286	983	3,556	37.1	38.3	28.3	34.5
Robe (DC)	6	93	319	40	885	907	905	2,697	30.7	32.5	31.4	31.5
Tatiara (DC)	6	135	382	71	2,075	1,880	1,540	5,495	49.6	46.4	36.8	44.2
Millicent (DC)	3	76	218	36	1,257	766	663	2,686	53.4	33.6	28.1	38.4
Mount Gambier (C)	21	615	1,863	277	10,598	9,481	7,385	27,464	55.6	51.4	38.7	48.5
Lower South East (SSD) — Balance	7	86	278	64	1,282	1,420	1,219	3,921	48.1	55.0	45.7	49.6
South East (SD)	52	1,168	3,521	575	17,872	16,157	13,159	47,188	49.4	46.1	36.3	43.9
Port Lincoln (C)	10	178	505	122	2,778	2,283	2,161	7,222	50.3	42.8	39.2	44.1
Lincoln (SSD) — Balance	11	167	421	96	1,776	1,427	1,210	4,413	34.3	28.5	23.4	28.7
Murat Bay (DC) and Streaky Bay (DC)	6	204	556	138	2,347	1,828	1,882	6,057	37.1	29.9	29.8	32.3
Unincorporated West Coast	3	76	260	40	815	468	774	2,057	34.6	20.5	32.9	29.4
Eyre (SD)	30	625	1,742	396	7,716	6,006	6,027	19,749	39.8	32.0	31.1	34.3
Whyalla (SSD)	12	288	755	269	4,870	4,344	3,218	12,432	54.5	50.3	36.0	46.9
Pirie (SSD)	8	163	446	71	2,961	2,760	2,145	7,866	58.6	56.4	42.5	52.5
Port Augusta (C)	9	299	895	126	5,655	4,338	3,550	13,543	61.0	48.4	38.3	49.2
Flinders Ranges (SSD) — Balance	7	169	583	71	3,224	1,442	930	5,596	61.5	28.4	17.8	36.0
Far North (SSD)	9	377	1,067	160	5,108	3,410	2,838	11,356	43.7	30.2	24.3	32.7
Northern (SD)	45	1,296	3,746	697	21,818	16,294	12,681	50,793	54.3	41.9	31.6	42.6
South Australia	342	10,650	29,864	7,624	184,904	172,780	134,942	492,626	56.0	54.1	40.9	50.3

(a) From December quarter 1993, establishments with fewer than 5 rooms have been formally excluded from the scope of this collection. See Explanatory Note 2 (page 21).

SUBDIVISIONS AND STATISTICAL LOCAL AREAS, SOUTH AUSTRALIA, DECEMBER QUARTER 1993 (a)

<i>Guest nights</i>				<i>Guest arrivals</i>				<i>Takings from accommodation (\$'000)</i>			
<i>Oct.</i>	<i>Nov.</i>	<i>Dec.</i>	<i>Dec. qtr</i>	<i>Oct.</i>	<i>Nov.</i>	<i>Dec.</i>	<i>Dec. qtr</i>	<i>Oct.</i>	<i>Nov.</i>	<i>Dec.</i>	<i>Dec. qtr</i>
2,274	2,235	1,828	6,337	1,191	987	939	3,117	60	69	41	170
217	262	397	876	100	130	163	393	6	7	10	23
5,837	6,069	4,940	16,846	2,967	2,769	2,552	8,288	220	259	172	651
2,750	2,489	1,954	7,193	1,370	1,039	1,190	3,599	115	142	101	359
3,757	3,950	3,389	11,096	1,984	1,887	1,801	5,672	151	189	133	472
97,403	96,484	72,110	265,997	43,938	42,630	33,868	120,436	6,135	7,844	4,084	18,064
10,786	9,927	9,078	29,791	5,351	4,825	5,353	15,529	285	338	222	845
4,721	4,676	2,947	12,344	2,077	1,450	1,577	5,104	172	228	113	513
8,901	8,154	6,928	23,983	3,690	3,044	3,087	9,821	252	307	176	735
4,218	3,987	4,201	12,406	2,318	2,148	2,235	6,701	175	209	149	533
22,804	21,912	19,381	64,097	10,617	8,129	7,713	26,459	1,209	1,465	969	3,643
2,016	2,284	1,909	6,209	558	553	536	1,647	49	75	49	173
5,091	4,971	4,934	14,996	2,558	2,428	2,589	7,575	179	188	146	514
170,775	167,400	133,996	472,171	78,719	72,019	63,603	214,341	9,070	11,321	6,365	26,696
4,346	3,871	3,329	11,546	2,688	2,503	2,152	7,343	140	134	113	387
4,156	3,313	2,842	10,311	2,605	2,319	2,031	6,955	135	112	92	340
2,562	1,954	2,533	7,049	1,202	872	985	3,059	70	54	65	189
4,127	3,311	3,704	11,142	2,201	2,013	2,061	6,275	141	114	111	366
1,319	1,052	1,828	4,199	767	643	1,029	2,439	35	31	53	119
7,163	5,798	6,922	19,883	4,260	3,431	3,693	11,384	227	182	203	611
8,219	7,296	7,200	22,715	4,647	3,854	4,342	12,843	289	295	264	847
31,892	26,595	28,358	86,845	18,370	15,635	16,293	50,298	1,036	921	902	2,859
1,525	1,010	1,141	3,676	978	764	791	2,533	55	37	35	127
1,021	770	1,145	2,936	727	471	637	1,835	19	18	25	62
1,792	1,073	1,680	4,545	875	607	799	2,281	41	30	35	106
3,333	2,854	2,128	8,315	2,584	2,234	1,584	6,402	114	99	71	284
2,036	1,505	1,546	5,087	1,389	1,094	997	3,480	49	38	40	127
9,707	7,212	7,640	24,559	6,553	5,170	4,808	16,531	277	223	207	707
2,539	1,767	2,070	6,376	1,507	956	1,112	3,575	77	53	55	185
4,691	3,392	3,200	11,283	2,947	2,229	2,122	7,298	135	105	83	323
7,067	5,059	4,448	16,574	5,197	3,865	3,128	12,190	210	165	132	507
1,052	836	883	2,771	892	708	741	2,341	27	22	23	72
2,845	2,573	2,057	7,475	2,127	1,761	1,575	5,463	81	73	55	209
1,833	1,087	1,515	4,435	1,354	919	933	3,206	49	30	39	119
20,027	14,714	14,173	48,914	14,024	10,438	9,611	34,073	578	449	388	1,415
896	911	791	2,598	846	855	714	2,415	21	22	20	62
2,061	1,735	1,522	5,318	1,469	1,247	1,227	3,943	62	59	48	168
1,941	1,776	2,055	5,772	1,478	1,315	1,369	4,162	43	43	52	138
3,519	2,905	2,562	8,986	2,802	2,310	2,101	7,213	97	87	69	252
1,461	936	909	3,306	701	508	493	1,702	46	32	26	104
17,449	14,125	12,339	43,913	9,655	7,970	7,560	25,185	564	498	412	1,474
2,479	2,517	2,462	7,458	1,795	1,786	1,564	5,145	83	90	83	256
29,806	24,905	22,640	77,351	18,746	15,991	15,028	49,765	915	830	709	2,454
4,276	3,173	3,454	10,903	2,505	1,860	1,771	6,136	142	116	117	375
2,670	2,007	1,872	6,549	1,771	1,222	1,313	4,306	80	66	54	199
3,922	2,848	3,513	10,283	3,188	2,216	2,836	8,240	121	97	104	321
1,774	960	1,959	4,693	1,718	954	1,917	4,589	51	28	53	132
12,642	8,988	10,798	32,428	9,182	6,252	7,837	23,271	393	306	327	1,027
6,386	5,317	4,158	15,861	3,217	2,449	2,008	7,674	222	204	177	602
4,724	3,896	3,177	11,797	3,679	2,736	2,297	8,712	165	145	115	426
9,500	6,916	7,169	23,585	5,870	4,597	4,602	15,069	302	253	217	772
6,487	2,571	1,764	10,822	4,106	1,475	1,114	6,695	210	86	54	350
9,031	5,943	5,193	20,167	6,707	4,744	4,201	15,652	351	237	198	787
36,128	24,643	21,461	82,232	23,579	16,001	14,222	53,802	1,250	925	761	2,937
310,977	274,457	239,066	824,500	169,173	141,506	131,402	442,081	13,461	14,975	9,660	38,096

TABLE 8 — HOLIDAY FLATS, UNITS AND HOUSES: STATISTICAL DIVISIONS AND SELECTED SUBDIVISIONS, SOUTH AUSTRALIA

Particulars	Adelaide (SD)				Outer Adelaide (SD)		
	Western (SSD)	Eastern (SSD)	Southern (SSD)	Total	Barossa and Kangaroo Island (SSDs)	Fleurieu (SSD)	Total
LETTING ENTITIES, CAPACITY AND EMPLOYMENT							
<i>December quarter 1992—</i>							
Letting entities	11	12	12	35	8	8	16
Flats, units and houses							
Single bedroom	31	140	60	231	19	8	27
Multiple bedroom	89	102	147	338	38	311	349
<i>Total flats, units and houses</i>	<i>120</i>	<i>242</i>	<i>207</i>	<i>569</i>	<i>57</i>	<i>319</i>	<i>376</i>
Bed spaces	508	879	925	2,312	278	1,906	2,184
Employment (persons) (a)	28	66	50	144	16	11	27
<i>December quarter 1993—</i>							
Letting entities	11	13	14	38	9	8	17
Flats, units and houses							
Single bedroom	31	140	60	231	25	8	33
Multiple bedroom	89	116	172	377	39	319	358
<i>Total flats, units and houses</i>	<i>120</i>	<i>256</i>	<i>232</i>	<i>608</i>	<i>64</i>	<i>327</i>	<i>391</i>
Bed spaces	504	961	1,072	2,537	316	1,970	2,286
Employment (persons) (a)	28	74	62	164	18	10	28
UNIT NIGHTS OCCUPIED							
<i>December quarter 1992</i>	<i>7,632</i>	<i>12,110</i>	<i>9,940</i>	<i>29,682</i>	<i>2,840</i>	<i>7,552</i>	<i>10,392</i>
<i>1993—</i>							
October	2,865	5,240	3,814	11,919	925	2,425	3,350
November	2,480	5,386	3,631	11,497	778	1,842	2,620
December	2,677	5,021	3,484	11,182	819	3,403	4,222
<i>December quarter 1993</i>	<i>8,022</i>	<i>15,647</i>	<i>10,929</i>	<i>34,598</i>	<i>2,522</i>	<i>7,670</i>	<i>10,192</i>
UNIT OCCUPANCY RATES (per cent)							
<i>December quarter 1992</i>	<i>69.1</i>	<i>54.4</i>	<i>52.2</i>	<i>56.7</i>	<i>54.2</i>	<i>25.7</i>	<i>30.0</i>
<i>1993—</i>							
October	77.0	66.0	53.0	63.2	46.6	23.9	27.6
November	68.9	70.1	53.3	63.5	40.5	18.8	22.3
December	72.0	63.3	50.4	60.2	41.3	33.6	34.8
<i>December quarter 1993</i>	<i>72.7</i>	<i>66.4</i>	<i>52.2</i>	<i>62.3</i>	<i>42.8</i>	<i>25.5</i>	<i>28.3</i>
UNIT LETTINGS							
<i>December quarter 1992</i>	<i>1,065</i>	<i>1,925</i>	<i>1,698</i>	<i>4,688</i>	<i>805</i>	<i>1,510</i>	<i>2,315</i>
<i>1993—</i>							
October	386	791	679	1,856	312	485	797
November	336	863	680	1,879	248	359	607
December	356	778	643	1,777	243	547	790
<i>December quarter 1993</i>	<i>1,078</i>	<i>2,432</i>	<i>2,002</i>	<i>5,512</i>	<i>803</i>	<i>1,391</i>	<i>2,194</i>
AVERAGE LENGTH OF STAY (days)							
<i>December quarter 1992</i>	<i>7.2</i>	<i>6.3</i>	<i>5.9</i>	<i>6.3</i>	<i>3.5</i>	<i>5.0</i>	<i>4.5</i>
<i>1993—</i>							
October	7.4	6.6	5.6	6.4	3.0	5.0	4.2
November	7.4	6.2	5.3	6.1	3.1	5.1	4.3
December	7.5	6.5	5.4	6.3	3.4	6.2	5.3
<i>December quarter 1993</i>	<i>7.4</i>	<i>6.4</i>	<i>5.5</i>	<i>6.3</i>	<i>3.1</i>	<i>5.5</i>	<i>4.6</i>
TAKINGS FROM ACCOMMODATION (\$'000)							
<i>December quarter 1992</i>	<i>564</i>	<i>838</i>	<i>678</i>	<i>2,081</i>	<i>138</i>	<i>296</i>	<i>434</i>
<i>1993—</i>							
October	207	358	239	804	49	92	141
November	178	422	242	842	37	65	102
December	199	350	289	837	48	157	205
<i>December quarter 1993</i>	<i>584</i>	<i>1,130</i>	<i>770</i>	<i>2,483</i>	<i>133</i>	<i>314</i>	<i>448</i>

TABLE 8 — HOLIDAY FLATS, UNITS AND HOUSES: STATISTICAL DIVISIONS AND SELECTED SUBDIVISIONS,
SOUTH AUSTRALIA—continued

Particulars	Yorke and Lower North (SD)	Murray Lands and South East (SDs)	Eyre (SD)	Northern (SD)	South Australia
LETTING ENTITIES, CAPACITY AND EMPLOYMENT					
<i>December quarter 1992—</i>					
Letting entities	10	8	10	5	84
Flats, units and houses					
Single bedroom	43	23	26	7	357
Multiple bedroom	62	123	59	35	966
<i>Total flats, units and houses</i>	<i>105</i>	<i>146</i>	<i>85</i>	<i>42</i>	<i>1,323</i>
Bed spaces	516	857	407	222	6,498
Employment (persons)(a)	28	16	18	16	249
<i>December quarter 1993—</i>					
Letting entities	10	7	9	6	87
Flats, units and houses					
Single bedroom	43	22	23	8	360
Multiple bedroom	62	116	56	48	1,017
<i>Total flats, units and houses</i>	<i>105</i>	<i>138</i>	<i>79</i>	<i>56</i>	<i>1,377</i>
Bed spaces	536	821	379	306	6,865
Employment (persons)(a)	26	10	18	20	266
UNIT NIGHTS OCCUPIED					
<i>December quarter 1992</i>	<i>3,363</i>	<i>2,015</i>	<i>1,944</i>	<i>1,279</i>	<i>48,675</i>
<i>1993—</i>					
October	1,326	430	769	815	18,609
November	715	464	489	203	15,988
December	813	932	730	87	17,966
<i>December quarter 1993</i>	<i>2,854</i>	<i>1,826</i>	<i>1,988</i>	<i>1,105</i>	<i>52,563</i>
UNIT OCCUPANCY RATES (per cent)					
<i>December quarter 1992</i>	<i>34.8</i>	<i>15.0</i>	<i>24.9</i>	<i>33.1</i>	<i>40.0</i>
<i>1993—</i>					
October	40.7	10.1	31.4	46.9	43.6
November	22.7	11.2	20.6	12.1	38.8
December	25.0	21.8	29.8	5.0	42.4
<i>December quarter 1993</i>	<i>29.5</i>	<i>14.4</i>	<i>27.4</i>	<i>21.4</i>	<i>41.6</i>
UNIT LETTINGS					
<i>December quarter 1992</i>	<i>1,422</i>	<i>525</i>	<i>423</i>	<i>432</i>	<i>9,805</i>
<i>1993—</i>					
October	602	141	183	339	3,918
November	329	118	111	115	3,159
December	301	200	165	65	3,298
<i>December quarter 1993</i>	<i>1,232</i>	<i>459</i>	<i>459</i>	<i>519</i>	<i>10,375</i>
AVERAGE LENGTH OF STAY (days)					
<i>December quarter 1992</i>	<i>2.4</i>	<i>3.8</i>	<i>4.6</i>	<i>3.0</i>	<i>5.0</i>
<i>1993—</i>					
October	2.2	3.0	4.2	2.4	4.7
November	2.2	3.9	4.4	1.8	5.1
December	2.7	4.7	4.4	1.3	5.4
<i>December quarter 1993</i>	<i>2.3</i>	<i>4.0</i>	<i>4.3</i>	<i>2.1</i>	<i>5.1</i>
TAKINGS FROM ACCOMMODATION (\$'000)					
<i>December quarter 1992</i>	<i>122</i>	<i>108</i>	<i>96</i>	<i>65</i>	<i>2,905</i>
<i>1993—</i>					
October	59	26	33	45	1,108
November	30	21	22	13	1,030
December	28	42	34	6	1,151
<i>December quarter 1993</i>	<i>118</i>	<i>88</i>	<i>89</i>	<i>64</i>	<i>3,290</i>

(a) Employment numbers exclude real estate agents and their employees.

TABLE 9 — CARAVAN PARKS BY STATISTICAL DIVISION, SOUTH AUSTRALIA

Particulars	Adelaide (SD)			Outer Adelaide (SD)			Yorke and Lower North (SD)	Murray Lands (SD)		
	Short-term	Long-term	Total	Short-term	Long-term	Total	Total	Short-term	Long-term	Total
ESTABLISHMENTS, CAPACITY AND EMPLOYMENT										
<i>December quarter 1992—</i>										
Establishments	13	13	26	23	6	29	36	26	8	34
Capacity										
On-site vans	206	54	260	121	34	155	127	154	63	217
Other powered sites	1,308	1,413	2,721	2,266	372	2,638	2,393	1,754	232	1,986
Unpowered sites	297	90	387	1,076	336	1,412	517	873	114	987
Cabins, flats, etc.	185	175	360	186	36	222	141	187	44	231
<i>Total capacity</i>	<i>1,996</i>	<i>1,732</i>	<i>3,728</i>	<i>3,649</i>	<i>778</i>	<i>4,427</i>	<i>3,178</i>	<i>2,968</i>	<i>453</i>	<i>3,421</i>
Sites occupied by long-term guests	151	945	1,096	130	108	238	113	141	87	228
Other sites permanently reserved	18	6	24	517	—	517	572	172	22	194
Employment (persons)	92	72	164	82	14	96	101	74	22	96
<i>December quarter 1993—</i>										
Establishments	12	14	26	22	7	29	36	25	9	34
Capacity										
On-site vans	210	51	261	122	39	161	124	125	82	207
Other powered sites	1,155	1,491	2,646	2,215	415	2,630	2,463	1,589	397	1,986
Unpowered sites	276	134	410	1,050	381	1,431	509	805	168	973
Cabins, flats, etc.	194	175	369	199	32	231	163	177	62	239
<i>Total capacity</i>	<i>1,835</i>	<i>1,851</i>	<i>3,686</i>	<i>3,586</i>	<i>867</i>	<i>4,453</i>	<i>3,259</i>	<i>2,696</i>	<i>709</i>	<i>3,405</i>
Sites occupied by long-term guests	126	937	1,063	129	122	251	113	88	124	212
Other sites permanently reserved	23	8	31	527	2	529	594	233	14	247
Employment (persons)	93	67	160	84	17	101	107	67	29	96
SITE NIGHTS OCCUPIED										
<i>December quarter 1992</i>	<i>69,439</i>	<i>103,518</i>	<i>172,957</i>	<i>88,692</i>	<i>14,052</i>	<i>102,744</i>	<i>107,603</i>	<i>49,838</i>	<i>12,646</i>	<i>62,484</i>
<i>1993—</i>										
October	21,565	32,012	53,577	30,093	4,725	34,818	38,764	18,139	6,349	24,488
November	21,804	31,532	53,336	26,932	4,493	31,425	33,208	15,198	5,201	20,399
December	24,889	35,147	60,036	35,986	4,442	40,428	40,190	17,760	6,654	24,414
<i>December quarter 1993</i>	<i>68,258</i>	<i>98,691</i>	<i>166,949</i>	<i>93,011</i>	<i>13,660</i>	<i>106,671</i>	<i>112,162</i>	<i>51,097</i>	<i>18,204</i>	<i>69,301</i>
SITE OCCUPANCY RATES (per cent)										
<i>December quarter 1992</i>	<i>37.8</i>	<i>65.0</i>	<i>50.4</i>	<i>26.4</i>	<i>19.6</i>	<i>25.2</i>	<i>36.8</i>	<i>18.3</i>	<i>30.3</i>	<i>19.9</i>
<i>1993—</i>										
October	37.9	55.8	46.9	27.1	17.6	25.2	38.4	21.7	28.9	23.2
November	39.6	56.8	48.2	25.0	17.3	23.5	34.0	18.9	24.5	20.0
December	43.8	61.3	52.5	32.4	16.5	29.3	39.8	21.6	30.3	23.4
<i>December quarter 1993</i>	<i>40.4</i>	<i>58.0</i>	<i>49.2</i>	<i>28.2</i>	<i>17.1</i>	<i>26.0</i>	<i>37.4</i>	<i>20.7</i>	<i>27.9</i>	<i>22.2</i>
TAKINGS FROM ACCOMMODATION (\$'000)										
<i>December quarter 1992</i>	<i>1,420</i>	<i>818</i>	<i>2,238</i>	<i>900</i>	<i>131</i>	<i>1,031</i>	<i>814</i>	<i>531</i>	<i>132</i>	<i>662</i>
<i>1993—</i>										
October	476	258	734	288	64	352	303	190	76	267
November	511	270	782	229	63	291	222	133	58	191
December	512	309	821	407	58	465	336	203	83	286
<i>December quarter 1993</i>	<i>1,500</i>	<i>838</i>	<i>2,337</i>	<i>924</i>	<i>185</i>	<i>1,108</i>	<i>862</i>	<i>527</i>	<i>217</i>	<i>744</i>

TABLE 9 — CARAVAN PARKS BY STATISTICAL DIVISION, SOUTH AUSTRALIA—continued

Particulars	South East (SD)		Eyre (SD)	Northern (SD)	South Australia			
	Short-term	Long-term	Total	Total	Total	Short-term	Long-term	Total
ESTABLISHMENTS, CAPACITY AND EMPLOYMENT								
<i>December quarter 1992—</i>								
Establishments	18	6	24	23	39	173	38	211
Capacity								
On-site vans	106	52	158	89	186	982	210	1,192
Other powered sites	1,530	199	1,729	1,528	1,818	12,374	2,439	14,813
Unpowered sites	587	125	712	883	1,856	5,919	835	6,754
Cabins, flats, etc.	110	84	194	179	221	1,187	361	1,548
<i>Total capacity</i>	<i>2,333</i>	<i>460</i>	<i>2,793</i>	<i>2,679</i>	<i>4,081</i>	<i>20,462</i>	<i>3,845</i>	<i>24,307</i>
Sites occupied by long-term guests	22	72	94	49	165	674	1,309	1,983
Other sites permanently reserved	12	—	12	35	20	1,343	31	1,374
Employment (persons)	66	24	90	112	115	630	144	774
<i>December quarter 1993—</i>								
Establishments	18	6	24	23	39	167	44	211
Capacity								
On-site vans	102	52	154	91	193	939	252	1,191
Other powered sites	1,536	201	1,737	1,546	1,822	11,994	2,836	14,830
Unpowered sites	627	135	762	858	1,839	5,736	1,046	6,782
Cabins, flats, etc.	130	85	215	185	243	1,256	389	1,645
<i>Total capacity</i>	<i>2,395</i>	<i>473</i>	<i>2,868</i>	<i>2,680</i>	<i>4,097</i>	<i>19,925</i>	<i>4,523</i>	<i>24,448</i>
Sites occupied by long-term guests	17	66	83	54	173	585	1,364	1,949
Other sites permanently reserved	19	—	19	43	33	1,467	29	1,496
Employment (persons)	73	25	98	78	109	593	156	749
SITE NIGHTS OCCUPIED								
<i>December quarter 1992</i>	<i>23,023</i>	<i>10,390</i>	<i>33,413</i>	<i>34,782</i>	<i>52,480</i>	<i>415,362</i>	<i>151,101</i>	<i>566,463</i>
<i>1993—</i>								
October	7,440	4,021	11,461	15,121	24,307	150,896	51,640	202,536
November	5,530	3,678	9,208	10,761	15,505	124,452	49,390	173,842
December	11,917	3,847	15,764	11,929	13,553	151,925	54,389	206,314
<i>December quarter 1993</i>	<i>24,887</i>	<i>11,546</i>	<i>36,433</i>	<i>37,811</i>	<i>53,365</i>	<i>427,273</i>	<i>155,419</i>	<i>582,692</i>
SITE OCCUPANCY RATES (per cent)								
<i>December quarter 1992</i>	<i>10.7</i>	<i>24.6</i>	<i>13.0</i>	<i>14.1</i>	<i>14.0</i>	<i>22.1</i>	<i>42.7</i>	<i>25.3</i>
<i>1993—</i>								
October	10.0	27.4	12.9	18.2	19.1	24.4	36.8	26.7
November	7.7	25.9	10.7	13.4	12.8	20.9	36.4	23.8
December	16.1	26.2	17.7	14.4	10.9	24.7	38.8	27.3
<i>December quarter 1993</i>	<i>11.3</i>	<i>26.5</i>	<i>13.8</i>	<i>15.3</i>	<i>14.3</i>	<i>23.4</i>	<i>37.3</i>	<i>26.0</i>
TAKINGS FROM ACCOMMODATION (\$'000)								
<i>December quarter 1992</i>	<i>429</i>	<i>181</i>	<i>610</i>	<i>470</i>	<i>688</i>	<i>5,167</i>	<i>1,348</i>	<i>6,515</i>
<i>1993—</i>								
October	141	61	202	196	343	1,890	505	2,396
November	99	62	161	147	187	1,492	489	1,982
December	229	66	295	171	166	1,987	554	2,541
<i>December quarter 1993</i>	<i>469</i>	<i>189</i>	<i>658</i>	<i>514</i>	<i>695</i>	<i>5,370</i>	<i>1,549</i>	<i>6,918</i>

TABLE 10 — CARAVAN PARKS: STATISTICAL DIVISIONS AND SELECTED SUBDIVISIONS

Statistical Divisions and Selected Subdivisions and Statistical Local Areas	Capacity					Total	Sites occupied by long-term guests	Other sites permanently reserved	Employment (persons)
	Establishments	On-site vans	Other powered sites	Unpowered sites	Cabins, flats, etc.				
Munno Para (C)	3	11	398	15	22	446	324	—	26
Northern (SSD) — Balance	4	12	494	55	51	612	302	—	17
Western and Eastern (SSDs)	5	113	590	156	138	997	52	—	54
Noarlunga (C)	5	24	438	39	97	598	271	1	18
Willunga (DC)	4	65	337	79	14	495	37	19	15
Southern (SSD) — Balance	5	36	389	66	47	538	77	11	30
<i>Adelaide (SD)</i>	<i>26</i>	<i>261</i>	<i>2,646</i>	<i>410</i>	<i>369</i>	<i>3,686</i>	<i>1,063</i>	<i>31</i>	<i>160</i>
Barossa (SSD)	8	52	662	625	47	1,386	88	8	30
Kangaroo Island and Onkaparinga (SSDs)	6	27	286	123	41	477	76	—	15
Yankalilla (DC)	4	7	408	145	31	591	9	189	10
Fleurieu (SSD) — Balance	11	75	1,274	538	112	1,999	78	332	46
<i>Outer Adelaide (SD)</i>	<i>29</i>	<i>161</i>	<i>2,630</i>	<i>1,431</i>	<i>231</i>	<i>4,453</i>	<i>251</i>	<i>529</i>	<i>101</i>
Central Yorke Peninsula (DC)	7	25	399	59	26	509	23	249	19
Minlaton (DC)	4	13	296	56	14	379	7	42	12
Yorke town (DC)	5	24	493	100	15	632	27	134	9
Yorke (SSD) — Balance	11	51	962	96	69	1,178	33	143	44
Lower North (SSD)	9	11	313	198	39	561	23	26	23
<i>Yorke and Lower North (SD)</i>	<i>36</i>	<i>124</i>	<i>2,463</i>	<i>509</i>	<i>163</i>	<i>3,259</i>	<i>113</i>	<i>594</i>	<i>107</i>
Riverland (SSD)	13	136	1,067	477	129	1,809	158	73	47
Meningie (DC)	6	21	271	245	41	578	7	5	19
Murray Bridge (RC)	6	38	230	114	36	418	29	34	17
Murray Mallee (SSD) — Balance	9	12	418	137	33	600	18	135	13
<i>Murray Lands (SD)</i>	<i>34</i>	<i>207</i>	<i>1,986</i>	<i>973</i>	<i>239</i>	<i>3,405</i>	<i>212</i>	<i>247</i>	<i>96</i>
Robe (DC)	3	11	329	96	34	470	1	1	23
Upper South East (SSD) — Balance	7	47	323	189	11	570	17	5	24
Mount Gambier (DC)	4	12	185	60	105	362	29	—	20
Lower South East (SSD) — Balance	10	84	900	417	65	1,466	36	13	31
<i>South East (SD)</i>	<i>24</i>	<i>154</i>	<i>1,737</i>	<i>762</i>	<i>215</i>	<i>2,868</i>	<i>83</i>	<i>19</i>	<i>98</i>
Lincoln (SSD)	14	69	1,004	489	96	1,658	46	40	45
West Coast (SSD)	9	22	542	369	89	1,022	8	3	33
<i>Eyre (SD)</i>	<i>23</i>	<i>91</i>	<i>1,546</i>	<i>858</i>	<i>185</i>	<i>2,680</i>	<i>54</i>	<i>43</i>	<i>78</i>
Port Pirie (C)	3	26	133	80	7	246	17	4	5
Pirie (SSD) — Balance	7	20	213	150	12	395	18	4	13
Mount Remarkable (DC)	5	13	193	225	20	451	3	8	8
Port Augusta (C)	3	33	242	160	64	499	37	9	18
Unincorporated Flinders Ranges	4	8	87	250	7	352	2	—	8
Flinders Ranges (SSD) — Balance	4	29	237	170	25	461	1	4	10
Unincorporated Far North	7	11	179	466	51	707	—	—	27
Far North (SSD) — Balance and Whyalla (SSD)	6	53	538	338	57	986	95	4	20
<i>Northern (SD)</i>	<i>39</i>	<i>193</i>	<i>1,822</i>	<i>1,839</i>	<i>243</i>	<i>4,097</i>	<i>173</i>	<i>33</i>	<i>109</i>
<i>South Australia</i>									
Short-term parks	167	939	11,994	5,736	1,256	19,925	585	1,467	593
Long-term parks	44	252	2,836	1,046	389	4,523	1,364	29	156
<i>Total</i>	<i>211</i>	<i>1,191</i>	<i>14,830</i>	<i>6,782</i>	<i>1,645</i>	<i>24,448</i>	<i>1,949</i>	<i>1,496</i>	<i>749</i>

AND STATISTICAL LOCAL AREAS, SOUTH AUSTRALIA, DECEMBER QUARTER 1993

<i>Site nights occupied</i>				<i>Site occupancy rates (per cent)</i>				<i>Takings from accommodation (\$'000)</i>			
<i>Oct.</i>	<i>Nov.</i>	<i>Dec.</i>	<i>Dec. qtr</i>	<i>Oct.</i>	<i>Nov.</i>	<i>Dec.</i>	<i>Dec. qtr</i>	<i>Oct.</i>	<i>Nov.</i>	<i>Dec.</i>	<i>Dec. qtr</i>
10,376	9,986	10,234	30,596	75.0	74.6	74.0	74.6	76	72	79	227
11,100	11,201	12,142	34,443	58.5	61.0	64.0	61.2	90	97	102	289
13,546	13,367	15,565	42,478	43.8	44.7	50.4	46.3	341	363	372	1,076
8,939	8,934	11,164	29,037	48.2	49.8	60.2	52.8	75	86	111	272
3,125	2,913	3,550	9,588	20.4	19.6	23.1	21.1	42	31	43	116
6,491	6,935	7,381	20,807	38.9	43.0	44.3	42.0	111	132	115	358
53,577	53,336	60,036	166,949	46.9	48.2	52.5	49.2	734	782	821	2,337
5,657	4,871	4,843	15,371	13.2	11.7	11.3	12.1	81	61	67	209
3,654	3,495	4,276	11,425	24.7	24.4	28.9	26.0	57	55	65	177
8,300	7,109	8,270	23,679	45.3	40.1	45.1	43.5	82	55	91	228
17,207	15,950	23,039	56,196	27.8	26.6	37.2	30.6	132	119	243	494
34,818	31,425	40,428	106,671	25.2	23.5	29.3	26.0	352	291	465	1,108
11,373	9,942	11,548	32,863	72.1	65.1	73.2	70.2	52	37	57	146
2,821	2,282	2,986	8,089	24.0	20.1	25.4	23.2	23	15	25	63
8,758	7,609	8,807	25,174	44.7	40.1	45.0	43.3	57	43	63	163
11,147	9,918	13,841	34,906	30.5	28.1	37.9	32.2	116	93	164	373
4,665	3,457	3,008	11,130	26.8	20.5	17.3	21.6	55	35	27	117
38,764	33,208	40,190	112,162	38.4	34.0	39.8	37.4	303	222	336	862
13,627	10,022	13,985	37,634	24.3	18.5	24.9	22.6	175	119	198	491
1,624	1,249	1,700	4,573	9.1	7.2	9.5	8.6	25	17	26	68
2,669	2,639	3,046	8,354	20.6	21.0	23.5	21.7	26	27	35	87
6,568	6,489	5,683	18,740	35.3	36.8	32.8	35.0	41	29	28	98
24,488	20,399	24,414	69,301	23.2	20.0	23.4	22.2	267	191	286	744
767	696	2,751	4,214	5.3	4.9	18.9	9.7	21	18	69	107
2,302	2,140	2,549	6,991	13.0	12.5	14.4	13.3	34	28	38	101
3,224	2,553	2,734	8,511	28.7	23.5	24.4	25.6	60	54	63	178
5,168	3,819	7,730	16,717	11.4	8.7	17.0	12.4	87	61	125	273
11,461	9,208	15,764	36,433	12.9	10.7	17.7	13.8	202	161	295	658
8,930	6,694	7,885	23,509	17.4	13.5	15.3	15.4	109	83	104	296
6,191	4,067	4,044	14,302	19.5	13.3	12.8	15.2	86	64	67	217
15,121	10,761	11,929	37,811	18.2	13.4	14.4	15.3	196	147	171	514
1,748	1,585	1,312	4,645	22.9	21.5	17.2	20.5	18	16	13	47
1,482	1,266	1,021	3,769	12.1	10.7	8.3	10.4	18	11	10	39
2,074	946	667	3,687	14.8	8.2	5.6	9.9	31	11	8	50
4,938	3,465	3,432	11,835	31.9	23.1	22.2	25.8	74	47	49	170
1,594	454	325	2,373	14.6	4.3	3.0	7.3	16	4	3	24
3,860	1,060	516	5,436	27.0	7.7	3.6	12.8	82	27	12	121
1,701	886	827	3,414	7.8	4.2	3.8	5.2	25	13	13	51
6,910	5,843	5,453	18,206	22.6	19.8	17.8	20.1	79	57	57	194
24,307	15,505	13,553	53,365	19.1	12.8	10.9	14.3	343	187	166	695
150,896	124,452	151,925	427,273	24.4	20.9	24.7	23.4	1,890	1,492	1,987	5,370
51,640	49,390	54,389	155,419	36.8	36.4	38.8	37.3	505	489	554	1,549
202,536	173,842	206,314	582,692	26.7	23.8	27.3	26.0	2,396	1,982	2,541	6,918

TABLE 11 — VISITOR HOSTELS BY STATISTICAL DIVISION, SOUTH AUSTRALIA

<i>Particulars</i>	<i>Adelaide (SD)</i>	<i>Outer Adelaide (SD)</i>	<i>Northern (SD)</i>	<i>Balance of State</i>	<i>South Australia</i>
ESTABLISHMENTS, CAPACITY AND EMPLOYMENT					
<i>December quarter 1992—</i>					
Establishments	16	7	8	9	40
Bed spaces	810	239	651	292	1,992
Employment (persons)	67	21	31	15	134
<i>December quarter 1993—</i>					
Establishments	17	7	10	8	42
Bed spaces	869	192	741	235	2,037
Employment (persons)	56	25	27	15	123
GUEST NIGHTS					
<i>December quarter 1992</i>	<i>39,051</i>	<i>4,660</i>	<i>6,106</i>	<i>5,247</i>	<i>55,064</i>
<i>1993—</i>					
October	11,771	1,049	3,166	1,641	17,627
November	14,962	1,550	2,431	1,951	20,894
December	15,007	1,829	2,215	1,724	20,775
<i>December quarter 1993</i>	<i>41,740</i>	<i>4,428</i>	<i>7,812</i>	<i>5,316</i>	<i>59,296</i>
BED OCCUPANCY RATES (per cent)					
<i>December quarter 1992</i>	<i>52.4</i>	<i>21.2</i>	<i>10.2</i>	<i>19.5</i>	<i>30.0</i>
<i>1993—</i>					
October	43.7	17.6	13.8	22.5	27.9
November	57.4	26.9	10.9	27.7	34.2
December	55.7	30.7	9.6	23.7	32.9
<i>December quarter 1993</i>	<i>52.2</i>	<i>25.1</i>	<i>11.5</i>	<i>24.6</i>	<i>31.6</i>
GUEST ARRIVALS					
<i>December quarter 1992</i>	<i>16,485</i>	<i>3,351</i>	<i>5,680</i>	<i>2,465</i>	<i>27,981</i>
<i>1993—</i>					
October	4,153	728	3,091	695	8,667
November	5,170	1,213	2,281	815	9,479
December	5,262	1,327	2,121	772	9,482
<i>December quarter 1993</i>	<i>14,585</i>	<i>3,268</i>	<i>7,493</i>	<i>2,282</i>	<i>27,628</i>
AVERAGE LENGTH OF STAY (days)					
<i>December quarter 1992</i>	<i>2.4</i>	<i>1.4</i>	<i>1.1</i>	<i>2.1</i>	<i>2.0</i>
<i>1993—</i>					
October	2.8	1.4	1.0	2.4	2.0
November	2.9	1.3	1.1	2.4	2.2
December	2.9	1.4	1.0	2.2	2.2
<i>December quarter 1993</i>	<i>2.9</i>	<i>1.4</i>	<i>1.0</i>	<i>2.3</i>	<i>2.1</i>
TAKINGS FROM ACCOMMODATION (\$'000)					
<i>December quarter 1992</i>	<i>433</i>	<i>46</i>	<i>38</i>	<i>40</i>	<i>558</i>
<i>1993—</i>					
October	138	10	22	12	182
November	181	15	19	14	229
December	177	19	17	14	227
<i>December quarter 1993</i>	<i>495</i>	<i>44</i>	<i>58</i>	<i>41</i>	<i>638</i>

EXPLANATORY NOTES

INTRODUCTION

1 This publication contains data for South Australia from a quarterly survey of tourist accommodation establishments. The period covered by the latest survey is the 3 months ended 31 December 1993.

SCOPE

2 Tourist accommodation establishments currently included in the survey comprise two groups:

- Establishments which provide predominantly short-term accommodation (i.e. for periods of less than 2 months) to the general public. These include:

Hotels, motels and guest houses, with facilities being hotels licensed to operate a public bar and motels, private hotels and guest houses all of which provide a bath (or shower) and toilet in most guest rooms and have breakfast available for guests.

NOTE: From December quarter 1993, hotel, motel and guest house establishments with fewer than five rooms have been formally excluded from the scope of this statistical collection. This change in scope resulted in the exclusion of 16 establishments which in the September quarter 1993 Survey aggregates for South Australia represented 4.5 per cent of hotel, motel and guest house establishments but accounted for less than 0.6 per cent of accommodation capacity, occupancy and takings respectively.

Holiday flats, units and houses (excluding establishments predominantly operated on a time share basis) which are operated by owners or managers who have sole letting rights to at least five flats, units or houses or by real estate agents for short-term letting. They are mainly self-contained in terms of cooking, bath (or shower) and toilet facilities and do not have breakfast available for guests. Data for holiday flats, units and houses include short-term owner occupation as well as paying guest occupation.

Visitor hostels which provide accommodation to visitors on a bed basis (rather than by the room). This category does not include establishments providing charity type accommodation (e.g. Salvation Army hostels) nor hotels, motels and guest houses without in-room facilities which provide accommodation on a per room basis.

- *Caravan parks* which provide either predominantly short-term (i.e. for periods of less than 2 months) or predominantly long-term (i.e. for periods of 2 months or more) accommodation to the general public and which provide powered sites for caravans and toilet, shower and laundry facilities for guests.

3 Data collected and published for each type of establishment (other than holiday flats, units and houses) include both long-term and short-term guests at these establishments.

4 Establishments which provide more than one type of accommodation (e.g. a motel with attached caravan park) are treated as two or more separate establishments. However, self-contained units, flats, cabins, etc. attached to hotels, motels or to caravan parks are included in the capacity for those establishments and not treated as separate holiday flat, unit or house establishments.

DEFINITIONS

5 *Number of establishments.* For hotels, motels and guest houses, caravan parks and visitor hostels, the number of establishments within the scope of the survey which operated for any part of the survey period, or which closed temporarily for the quarter for seasonal reasons.

6 *Number of letting entities.* For holiday flats, units and houses, the number of owners, managers or real estate agents within the scope of the survey who operated for any part of the survey period.

7 Capacity in terms of *Guest rooms, Bed spaces, Holiday units* or *Caravan park sites, etc.* is the maximum number available to accommodate paying guests during the survey period. Capacity closed temporarily for seasonal reasons is included.

8 *Bed spaces.* Three-quarter beds are counted as one bed space; double beds as two bed spaces. Cots are excluded.

9 *Total caravan park capacity* comprises *On-site vans, Other powered sites, Unpowered sites* and *Cabins, etc.*

EXPLANATORY NOTES—continued

DEFINITIONS—continued

10 *Room nights available.* The number of guest rooms available multiplied by the number of days for which they were available during the survey period. Includes operating periods only for establishments closing (other than for seasonal reasons) or opening during the survey period.

11 Occupancy in terms of *Room nights*, *Unit nights* or *Site nights occupied* refers to the total number of nights each guest room, holiday unit or caravan park site, etc. was occupied during the survey period.

NOTE: From September quarter 1992, caravan park sites, etc. permanently reserved for 2 months or more at the end of the survey period but only casually occupied by their tenants have been recorded continuously as *Site nights occupied* irrespective of whether the tenants of individual sites were in residence on any particular night. (See also paragraph 14 below). Previously, usage of these sites was recorded as *Site nights occupied* only when their tenants were in the park. Total site occupancy rates from September quarter 1992 are therefore not comparable with those from previous quarters.

12 Occupancy in terms of *Guest nights* refers to the total number of nights each paying guest stayed during the survey period.

13 *Sites occupied by long-term guests.* The total number of sites, etc. occupied at the end of the survey period by guests who have stayed continuously for 2 months or more.

14 *Other sites permanently reserved.* The total number of powered and unpowered sites, on-site vans and cabins, etc. continuously let for 2 months or more by the end of the survey period to tenants who occupy the sites only on a casual or sporadic basis. Separate data for this item are available only from September quarter 1992.

15 *Occupancy rates* represent occupancy expressed as a percentage of total capacity available during the survey period - e.g.

$$\text{Room occupancy rate (\%)} \text{ for the period} = \frac{\text{Room nights occupied}}{(\text{Guest rooms}) \times (\text{No. of days in the period})} \times 100$$

providing that, for establishments closing (other than for seasonal reasons) or opening during the period, the denominator of the above expression includes only operating periods.

16 *Guest arrivals.* The total number of paying guests counted only on the first night they stayed at the accommodation establishment.

17 *Unit lettings.* The total number of times a holiday flat, unit or house was occupied by a new tenant, counted only on the first night it was occupied by the new tenant.

18 *Average length of stay* is expressed in number of days and calculated:

- for hotels, motels and guest houses and for visitor hostels, by dividing *Guest nights* by *Guest arrivals* and
- for holiday flats, units and houses, by dividing *Unit nights occupied* by *Unit lettings*.

19 *Takings from accommodation.* Revenue received from the provision of accommodation. Takings from meals are excluded. Takings from accommodation for each month generally represent the takings received during that month. Where payments are received in advance of, or after, the provision of accommodation to guests, the monthly figure for takings from accommodation may not necessarily bear a direct relationship to the number of guests accommodated during the month. Rental and storage fees paid to caravan parks for the keeping of private vans in parks are included in the takings of the month they are received.

20 *Star grading.* The grading of hotels and motels with facilities based on the classification system used by members of the Australian Automobile Association (AAA). The gradings are allocated according to a points system based on the amenities and facilities available to guests. Details of the grading scheme are contained in the RACV-RAASA members' publication *Accommodation Australia*, or the individual tour guides produced by members of the AAA. For the purpose of classifying establishments to a star

EXPLANATORY NOTES —continued

grading in this publication, 'half' star gradings are ignored (e.g. a two and a half star grading has been shown as two star).

21 *Employment.* The number of persons working at accommodation establishments at the end of the survey period (including working proprietors and those working on other than accommodation activities).

AUSTRALIAN STANDARD
GEOGRAPHICAL
CLASSIFICATION

22. Statistics presented in this publication have been classified according to the Australian Standard Geographical Classification (ASGC), Edition 2.3. This classification incorporates a number of hierarchic structures of geographic areas. The appropriate spatial units of the main structure of the ASGC used in this publication are shown in the appendix and are defined as follows.

Statistical Local Areas (SLAs) are legal local government areas or equivalent spatial units which serve as the smallest type of spatial unit considered appropriate for the presentation of statistics. In aggregate, SLAs cover the whole of the State without gaps or overlaps.

Statistical Subdivisions (SSDs). These consist of one or more SLAs and form the intermediate size spatial unit for the presentation of regional data.

Statistical Divisions (SDs). These consist of one or more SSDs. The divisions are designed to be relatively homogeneous regions characterised by identifiable social and economic units within the region, under the unifying influence of one or more major towns or cities. For more detailed information, refer to the ASGC (1216.0).

UNPUBLISHED STATISTICS

23 The ABS may make available on request certain unpublished tourist accommodation statistics. A charge may be made for this information.

RELATED PUBLICATIONS

24 Publications for Australia, and each State and Territory, are released by the respective offices of the ABS. Tourist accommodation statistics for past quarters are available on request.

25 Other ABS publications which may be of interest include:

Directory of Tourism Statistics, 1991 (1130.0) (irregular)

Overseas Arrivals and Departures, Australia (3401.0) (monthly)

Tourist Accommodation, Australia (8635.0) (quarterly)

26 Current publications produced by the ABS are listed in the *Catalogue of Publications and Products* (1101.0). The ABS also issues the *Publications Advice* (1105.0) on Tuesdays and Fridays which lists publications to be released in the next few days. Both the *Catalogue* and *Publications Advice* are available from any ABS office.

SYMBOLS AND
OTHER USAGES

- n.a. not available
- n.p. not available for publication but included in totals where applicable
- r figure or series revised since previous issue
- .. not applicable
- nil or rounded to zero
- (C) Municipality with city status
- (DC) District council
- (M) Municipality
- (RC) Rural City

27 Where figures have been rounded, discrepancies may occur between totals and the sums of the component items.

P. M. GARDNER
Deputy Commonwealth Statistician
and Government Statist

APPENDIX

STATISTICAL DIVISIONS, STATISTICAL SUB DIVISIONS AND STATISTICAL LOCAL AREAS,
SOUTH AUSTRALIA

ADELAIDE

Northern

Elizabeth (C)
 Enfield (C) – Pt A
 Gawler (M)
 Munno Para (C)
 Salisbury (C)
 Tea Tree Gully (C)

Western

Enfield (C) – Pt B
 Henley & Grange (C)
 Hindmarsh (M)
 Port Adelaide (C)
 Thebarton (M)
 West Torrens (C)
 Woodville (C)
 Unincorporated Western

Eastern

Adelaide (C)
 Burnside (C)
 Campbelltown (C)
 East Torrens (DC)
 Kensington & Norwood (C)
 Payneham (C)
 Prospect (C)
 St Peters (M)
 Stirling (DC)
 Unley (C)
 Walkerville (M)

Southern

Brighton (C)
 Glenelg (C)
 Happy Valley (C)
 Marion (C)
 Mitcham (C)
 Noarlunga (C)
 Willunga (DC)

OUTER ADELAIDE

Barossa

Angaston (DC)
 Barossa (DC)
 Gumeracha (DC)
 Kapunda (DC)
 Light (DC)
 Mallala (DC)
 Mount Pleasant (DC)
 Tanunda (DC)

Kangaroo Island

Dudley (DC)
 Kingscote (DC)

Onkaparinga

Mount Barker (DC)
 Onkaparinga (DC)

Fleurieu

Port Elliot & Goolwa (DC)
 Strathalbyn (DC)
 Victor Harbor (DC)
 Yankalilla (DC)

YORKE AND LOWER NORTH

Yorke

Butc (DC)
 Central Yorke Peninsula (DC)
 Minlaton (DC)
 Northern Yorke Peninsula (DC)
 Port Broughton (DC)
 Wallaroo (M)
 Warooka (DC)
 Yorketown (DC)
 Unincorporated Yorke

Lower North

Blyth-Snowtown (DC)
 Burra Burra (DC)
 Clare (DC)
 Eudunda (DC)
 Riverton (DC)
 Robertstown (DC)
 Saddleworth & Auburn (DC)
 Spalding (DC)
 Wakefield Plains (DC)

MURRAY LANDS***Riverland***

Barmera (DC)
 Berri (DC)
 Browns Well (DC)
 Loxton (DC)
 Morgan (DC)
 Paringa (DC)
 Renmark (M)
 Waikerie (DC)
 Unincorporated Riverland

Murray Mallee

Coonalpyn Downs (DC)
 Karoonda-East Murray (DC)
 Lameroo (DC)
 Mannum (DC)
 Meningie (DC)
 Murray Bridge (DC)
 Peake (DC)
 Pinnaroo (DC)
 Ridley-Truro (DC)
 Unincorporated Murray Mallee

SOUTH EAST***Upper South East***

Lacepede (DC)
 Lucindale (DC)
 Naracoorte (M)
 Naracoorte (DC)
 Robe (DC)
 Tatiara (DC)

Lower South East

Beachport (DC)
 Millicent (DC)
 Mount Gambier (C)
 Mount Gambier (DC)
 Penola (DC)
 Port MacDonnell (DC)

EYRE***Lincoln***

Cleve (DC)
 Elliston (DC)
 Franklin Harbor (DC)
 Kimba (DC)
 Le Hunte (DC)
 Lower Eyre Peninsula (DC)
 Port Lincoln (C)
 Tumby Bay (DC)
 Unincorporated Lincoln

West Coast

Murat Bay (DC)
 Streaky Bay (DC)
 Unincorporated West Coast

NORTHERN***Whyalla***

Whyalla (C)
 Unincorporated Whyalla

Pirie

Crystal Brook-Redhill (DC)
 Hallett (DC)
 Jamestown (DC)
 Orreroo (DC)
 Peterborough (M)
 Peterborough (DC)
 Pirie (DC)
 Port Pirie (C)
 Rocky River (DC)
 Unincorporated Pirie

Flinders Ranges

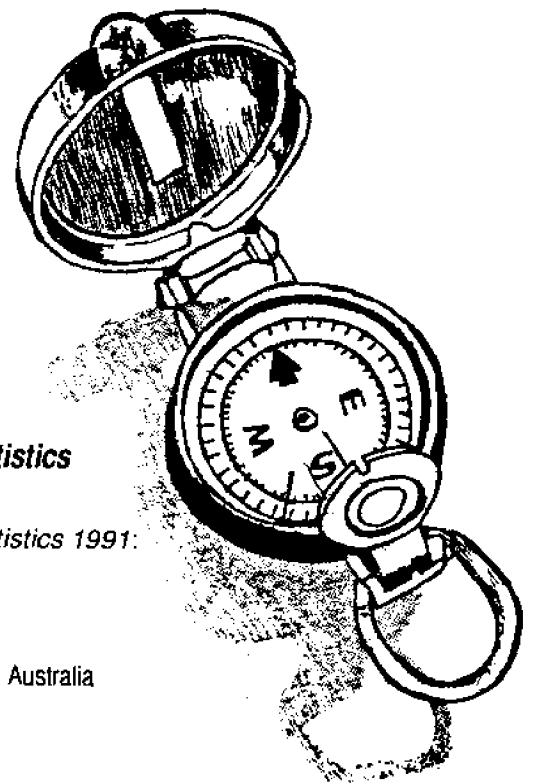
Carrieton (DC)
 Hawker (DC)
 Kanyaka-Quorn (DC)
 Mount Remarkable (DC)
 Port Augusta (C)
 Unincorporated Flinders Ranges

Far North

Cooper Pedy (DC)
 Roxby Downs (M)
 Unincorporated Far North



DIRECTORY OF TOURISM STATISTICS 1991



Suitable for the Experienced Researcher or Occasional User of Tourism Statistics

An essential tool for tourism business decisions, the *Directory of Tourism Statistics 1991*:

- ◆ offers **quick reference** sources of tourism data
- ◆ provides a **comprehensive** listing of public sector statistical data sources available within Australia
- ◆ **provides** appropriate contact details
- ◆ **presents** data to illustrate the uses of the surveys presented
- ◆ **outlines** industry standard definitions and measures of tourism activity, for survey designers.

For Your Copy Mail Or Fax Us Today Or Telephone Direct On (08) 237 7582

ORDER FORM

Return your completed order form to:

**ABS Bookshop
GPO Box 2272
ADELAIDE SA 5001
(08) 237 7566**

or fax a photocopy of this order form to:

I wish to purchase copies of the *Directory of Tourism Statistics, 1991* (Catalogue No. 1130.0) at \$49.50 per copy.

Please find enclosed my cheque or money order for \$.....

(Cheques/money orders should be made payable to The Collector of Public Monies)

OR

Please debit my Bankcard Mastercard Visa for \$.....

Card No. _____ Expiry date ____ / ____ / ____

Name on card _____

Signature _____

POST TO:

Name _____

Organisation _____

Type of business _____

Address _____

Postcode _____ Phone _____



For more information ...

The ABS publishes a wide range of information on Australia's economic and social conditions. A catalogue of publications and products is available from any of our Offices (see below for contact details).

Information Consultancy Service

Special tables or in-depth data investigations are provided by the ABS Information Consultancy Service in each of our Offices (see below for contact details).

Electronic Data Services

A growing range of our data is available on electronic media. Selections of the most frequently requested data are available, updated daily, on DISCOVERY (Key *656#). Our PC TELESTATS service delivers major economic indicator publications ready to download into your computer on the day of release. Our PC AUSSTATS service enables on-line access to a data base of thousands of up-to-date time series. Selected data sets are also available on diskette or CD-ROM. For more details on our electronic data services, contact Information Services in any of our Offices on the numbers below.

Bookshops and Subscriptions

There are over 500 titles available from the ABS Bookshops in each of our Offices. You can also receive any of our publications on a regular basis. Join our subscription mailing service and have your publications mailed to you in Australia at no additional cost. Telephone our Publications Subscription Service toll free on 008 02 06 08 Australia wide.

Sales and Inquiries

55 Currie Street, Adelaide



SYDNEY (02) 268 4611
MELBOURNE (03) 615 7000
BRISBANE (07) 222 6351
PERTH (09) 323 5140
NATIONAL OFFICE (CANBERRA) (06) 252 6007

ADELAIDE (08) 237 7100
HOBART (002) 20 5800
DARWIN (089) 43 2111
CANBERRA (06) 207 0326



Information Services, ABS, GPO Box 2272, ADELAIDE SA 5001
or any ABS Office.

